

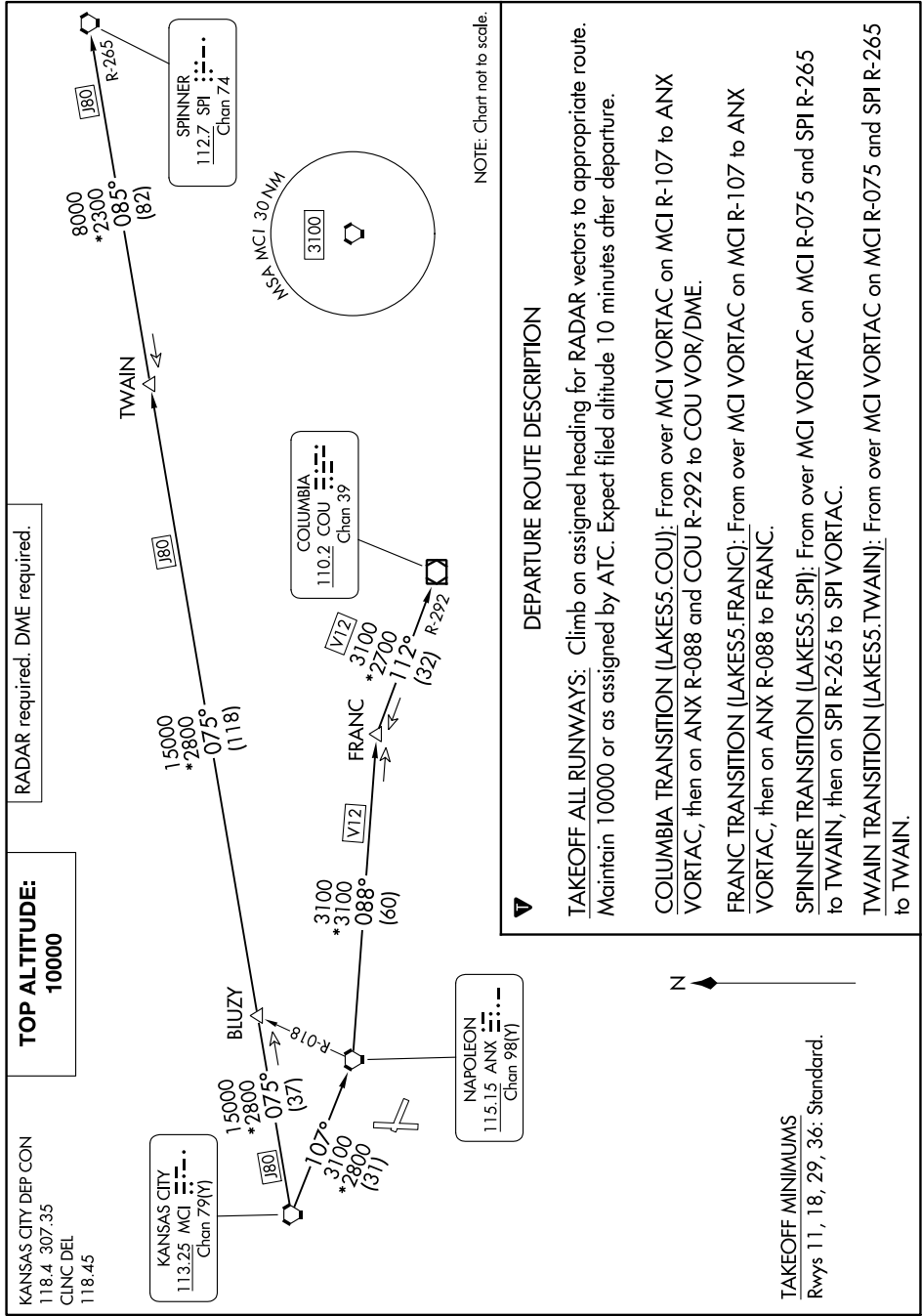
LAKES FIVE DEPARTURE

AL-6104 (FAA)

LEE'S SUMMIT MUNI (LXT)

LEE'S SUMMIT, MISSOURI

NC-3, 31 OCT 2024 to 28 NOV 2024



TOP ALTITUDE:
10000

KANSAS CITY DEP CON
118.4 307.35
CINC DEL
118.45

RADAR required. DME required.

NOTE: Chart not to scale.

DEPARTURE ROUTE DESCRIPTION

TAKEOFF ALL RUNWAYS: Climb on assigned heading for RADAR vectors to appropriate route. Maintain 10000 or as assigned by ATC. Expect filed altitude 10 minutes after departure.

COLUMBIA TRANSITION (LAKES5.COU): From over MCI VORTAC on MCI R-107 to ANX VORTAC, then on ANX R-088 and COU R-292 to COU VOR/DME.

FRANC TRANSITION (LAKES5.FRANC): From over MCI VORTAC on MCI R-107 to ANX VORTAC, then on ANX R-088 to FRANC.

SPINNER TRANSITION (LAKES5.SPI): From over MCI VORTAC on MCI R-075 and SPI R-265 to TWAIN, then on SPI R-265 to SPI VORTAC.

TWAIN TRANSITION (LAKES5.TWAIN): From over MCI VORTAC on MCI R-075 and SPI R-265 to TWAIN.

TAKEOFF MINIMUMS
Rwys 11, 18, 29, 36: Standard.

NC-3, 31 OCT 2024 to 28 NOV 2024

LAKES FIVE DEPARTURE