

|  |                        |   |
|--|------------------------|---|
| WAAS<br>CH <b>63238</b><br><b>W36A</b> | APP CRS<br><b>001°</b> | Rwy Idg <b>3202</b><br>TDZE <b>551</b><br>Apt Elev <b>551</b> |
|--|------------------------|---|

# RNAV (GPS) RWY 36

HOLLY SPRINGS-MARSHALL COUNTY (M41)

RNP APCH-GPS.

**▼** Baro-VNAV NA. Helicopter visibility reduction below  $\frac{3}{4}$  SM NA.  
**▲** NA Use Olive Branch altimeter setting; when not received, use Oxford altimeter setting and increase LPV DA to 873, LNAV/VNAV DA to 883 and all MDA 20 feet; increase LPV all Cats and LNAV Cat C visibility  $\frac{1}{8}$  mile.

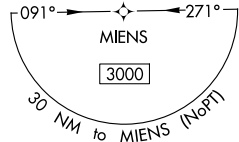
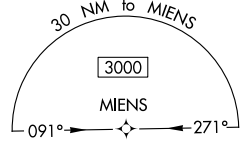
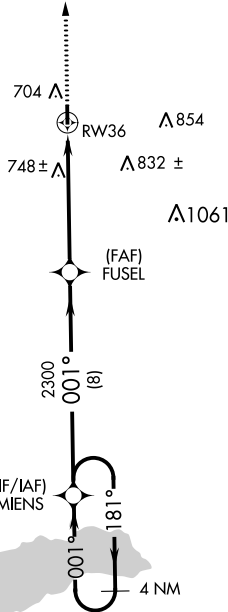
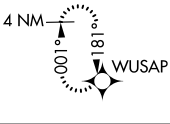
MISSED APPROACH: Climb to 3000 direct WUSAP and hold.

OLV AWOS-3  
**119.925**

MEMPHIS APP CON  
**125.8 338.3**

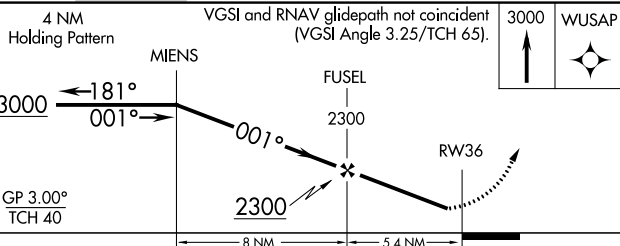
UNICOM  
**122.8** (CTAF)

MISSED APCH FIX



SC-4, 31 OCT 2024 to 28 NOV 2024

SC-4, 31 OCT 2024 to 28 NOV 2024



| CATEGORY          | A                     | B                          | C  | D  |
|-------------------|-----------------------|----------------------------|--|----|
| LPV DA            | 861-1                 | 310 (400-1)                |  | NA |
| LNAV/VNAV DA      | 871-1 $\frac{1}{8}$   | 320 (400-1 $\frac{1}{8}$ ) |  | NA |
| LNAV MDA          | 1060-1                | 509 (600-1)                | 1060-1 $\frac{3}{8}$<br>509 (600-1 $\frac{3}{8}$ ) | NA |
| <b>C</b> CIRCLING | 1080-1<br>529 (600-1) | 1100-1<br>549 (600-1)      | 1260-2<br>709 (800-2)                              | NA |

