

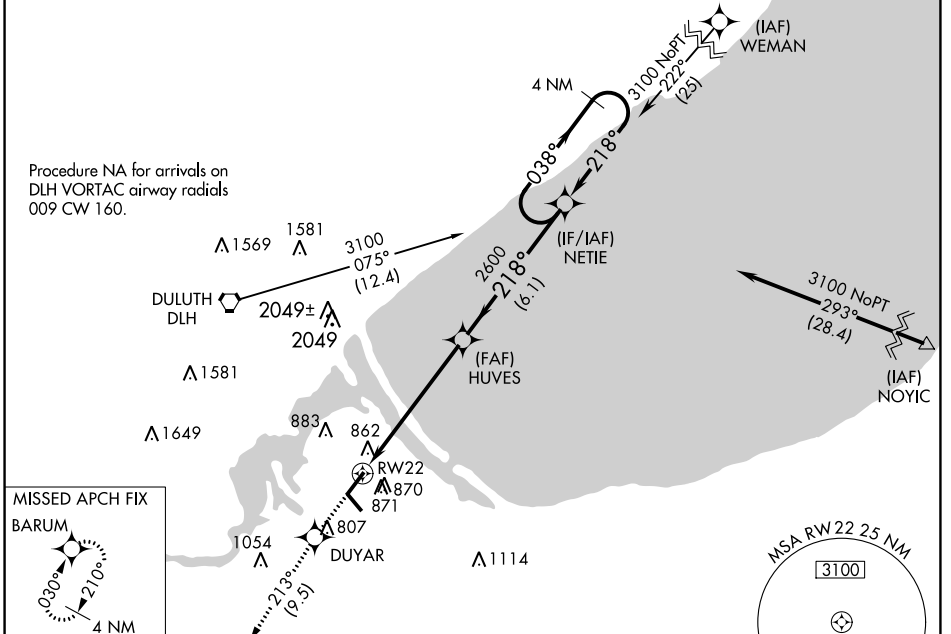
WAAS CH <b>69429</b> <b>W22A</b>	APP CRS <b>218°</b>	Rwy Idg TDZE Apt Elev	<b>5100</b> <b>666</b> <b>674</b>
----------------------------------------	------------------------	-----------------------------	-----------------------------------------

# RNAV (GPS) RWY 22

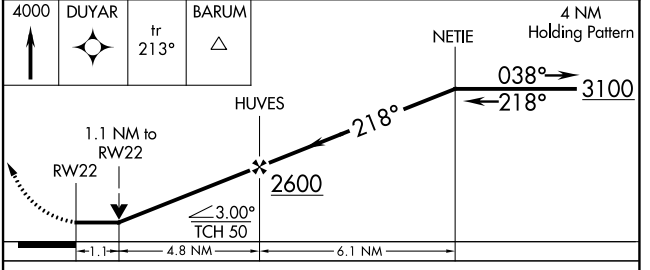
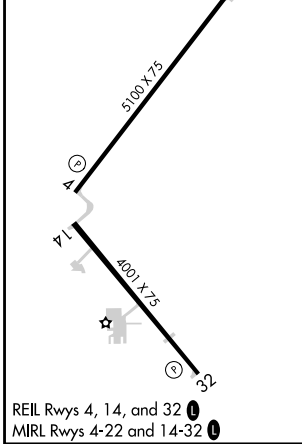
RICHARD I BONG (SUW)

RNP APCH.	MISSED APPROACH: Climb to 4000 direct DUYAR and on track 213° to BARUM and hold, continue climb-in-hold to 4000.
<p><b>▼</b> Rwy 22 helicopter visibility reduction below <math>\frac{3}{4}</math> SM NA.</p> <p><b>▲</b> When local altimeter setting not received, use Sky Harbor altimeter setting.</p>	

AWOS-3 <b>120.35</b>	DULUTH APP CON <b>125.45 233.7</b>	CLNC DEL <b>124.8</b>	UNICOM <b>122.7 (CTAF) 0</b>
-------------------------	---------------------------------------	--------------------------	---------------------------------



ELEV <b>674</b>	TDZE <b>666</b>
-----------------	-----------------



CATEGORY	A	B	C	D
LP MDA	1060-1	394 (400-1)	1060-1½	394 (400-1½)
LNAV MDA	1240-1	574 (600-1)	1240-1½	574 (600-1½)
CIRCLING	1240-1	566 (600-1)	1360-2 686 (700-2)	1360-2¼ 686 (700-2¼)

EC-3, 31 OCT 2024 to 28 NOV 2024

EC-3, 31 OCT 2024 to 28 NOV 2024