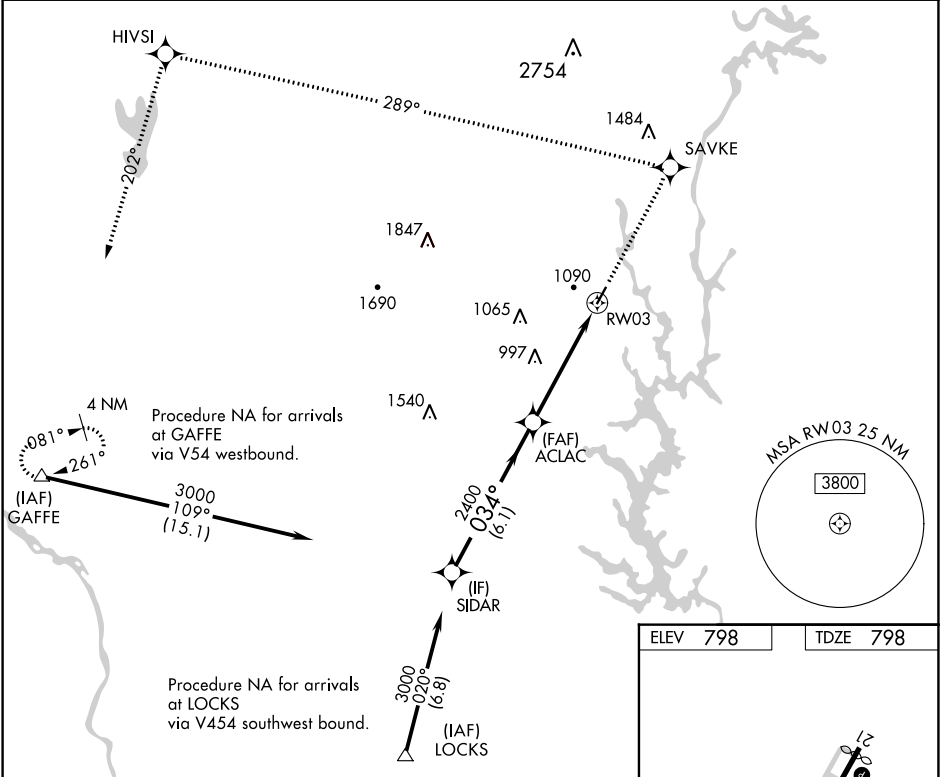


WAAS CH 90302 W03A	APP CRS 034°	Rwy Idg TDZE Apt Elev	3770 798 798
--	------------------------	-----------------------------	---

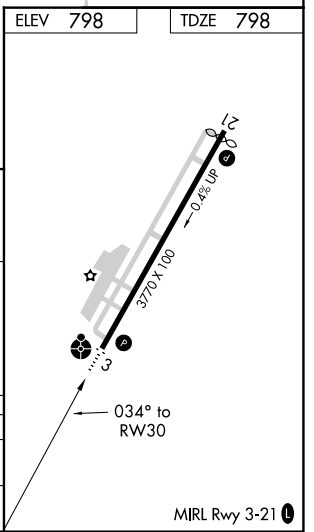
RNAV (GPS) RWY 3

GASTONIA MUNI (AKH)

RNP APCH. ▼ If local altimeter setting not received, use Charlotte Douglas Intl altimeter setting and increase all DAs/MDAs 40 feet. Inoperative table does not apply.		ODALS ● ⋮	MISSED APPROACH: Climb to 3200 direct SAVKE and via 289° track to HIVSI and 202° track to GAFFE and hold.
ASOS 135.725	CHARLOTTE APP CON 120.05 257.2	CLNC DEL 127.2	UNICOM 123.0 (CTAF) 0



VGSi and RNAV glidepath not coincident (VGSi Angle 3.00/TCH 26).		3200 SAVKE	HIVSI	GAFFE
Procedure Turn NA		↑	tr 289°	tr 202°
SIDAR		ACLAC	RW03	
GP 3.00° TCH 40		3000	2400	
		6.1 NM	4.8 NM	
CATEGORY	A	B	C	D
LPV DA	1118-1¼ 320 (400-1¼)			NA
LNAV MDA	1440-1	642 (700-1)	1440-1¾ 642 (700-1¾)	NA



SE-2, 19 MAY 2022 to 16 JUN 2022

SE-2, 19 MAY 2022 to 16 JUN 2022