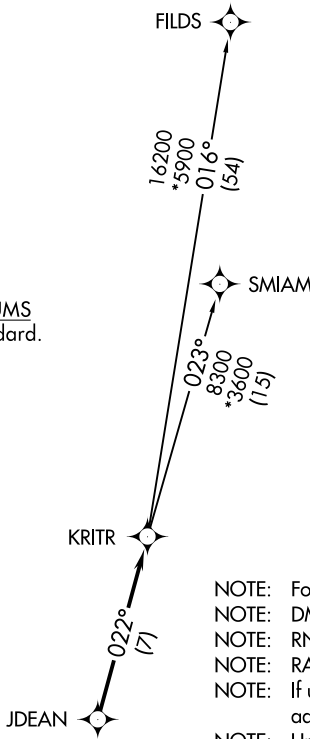


KRITR FIVE DEPARTURE (RNAV)

ASOS
135.725
CLNC DEL
127.2
UNICOM
123.0 (CTAF)
CHARLOTTE DEP CON
120.05 257.2

**TOP ALTITUDE:
3000**

TAKEOFF MINIMUMS
Rwys 3, 21: Standard.



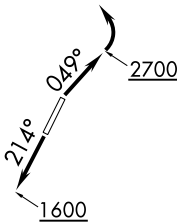
- NOTE: For turbojets only.
- NOTE: DME/DME/IRU or GPS required.
- NOTE: RNAV 1.
- NOTE: RADAR required.
- NOTE: If unable to accept climb rates, advise ATC on initial contact.
- NOTE: Upon reaching 10000 MSL, accelerate to and maintain 280K, if unable advise ATC.

▼ DEPARTURE ROUTE DESCRIPTION

TAKEOFF RWY 3: Climb heading 049° to 2700 before turning left.
TAKEOFF RWY 21: Climb heading 214° to 1600 before proceeding north.

Climb on heading assigned by ATC, expect RADAR vectors to JDEAN, then on track 022° to KRITR, then on assigned transition. Maintain 3000, expect filed altitude within 10 minutes after departure.

FILDS TRANSITION (KRITR5.FILDS)
SMIAM TRANSITION (KRITR5.SMIAM)



NOTE: Chart not to scale.

SE-2, 19 MAY 2022 to 16 JUN 2022

SE-2, 19 MAY 2022 to 16 JUN 2022