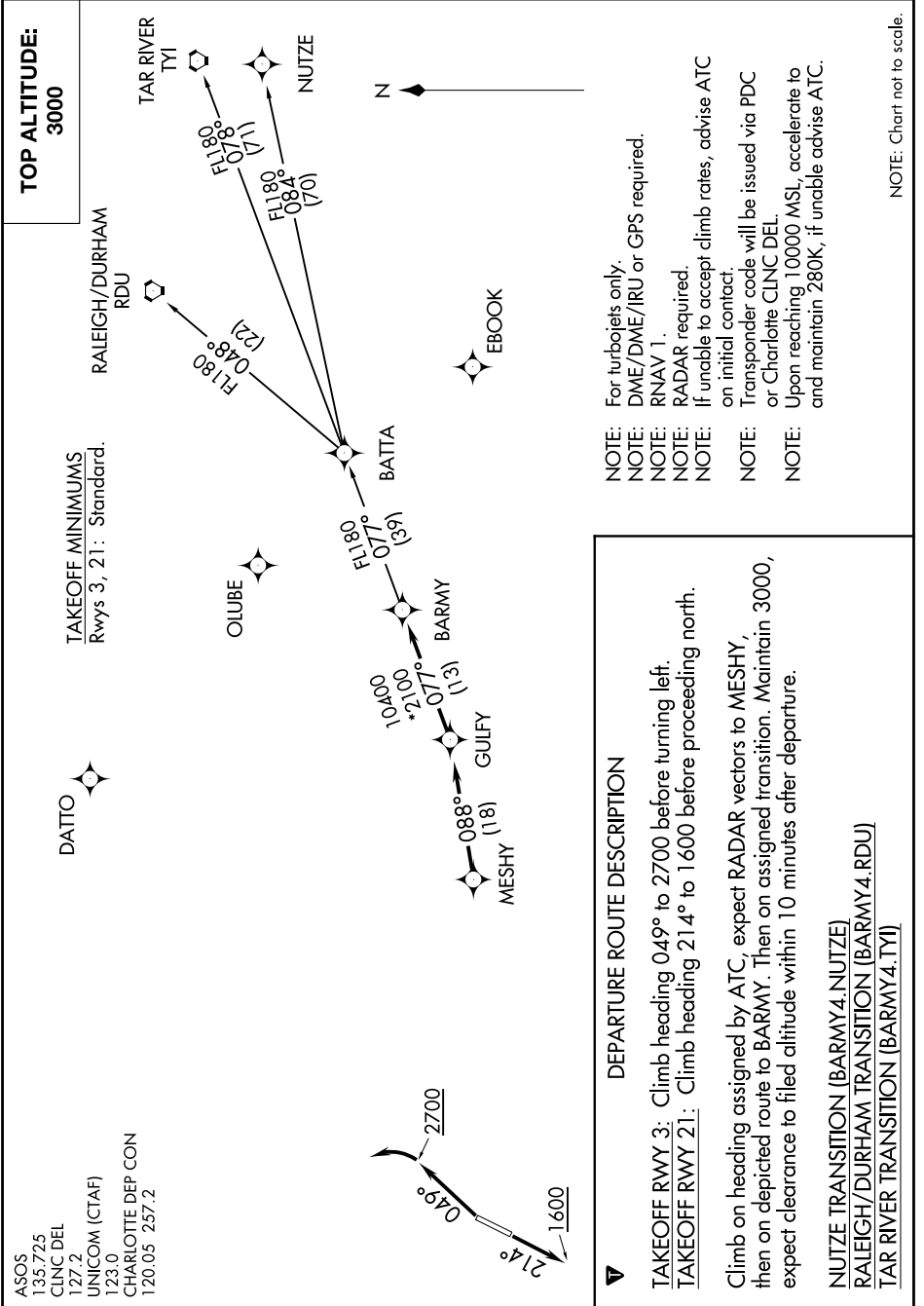


# BARMY FOUR DEPARTURE (RNAV)

SE-2, 19 MAY 2022 to 16 JUN 2022



**TOP ALTITUDE:**  
3000

TAKEOFF MINIMUMS  
Rwys 3, 21: Standard.

ASOS  
135.725  
CLNC DEL  
127.2  
UNICOM (CTAF)  
123.0  
CHARLOTTE DEP CON  
120.05 257.2

- NOTE: For turboprops only.
- NOTE: DME/DME/IRU or GPS required.
- NOTE: RNAV 1.
- NOTE: RADAR required.
- NOTE: If unable to accept climb rates, advise ATC on initial contact.
- NOTE: Transponder code will be issued via PDC or Charlotte CLNC DEL.
- NOTE: Upon reaching 10000 MSL, accelerate to and maintain 280K, if unable advise ATC.

**DEPARTURE ROUTE DESCRIPTION**

**TAKEOFF RWY 3:** Climb heading 049° to 2700 before turning left.  
**TAKEOFF RWY 21:** Climb heading 214° to 1600 before proceeding north.

Climb on heading assigned by ATC, expect RADAR vectors to MESHY, then on depicted route to BARMY. Then on assigned transition. Maintain 3000, expect clearance to filed altitude within 10 minutes after departure.

NUTZE TRANSITION (BARMY4.NUTZE)  
RALEIGH/DURHAM TRANSITION (BARMY4.RDU)  
TAR RIVER TRANSITION (BARMY4.TYI)

NOTE: Chart not to scale.

SE-2, 19 MAY 2022 to 16 JUN 2022

# BARMY FOUR DEPARTURE (RNAV)