

WAAS CH 50321 W06A	APP CRS 063°	Rwy Idg TDZE 1446 Apt Elev 1448	4111 1446 1448
----------------------------------------	------------------------	-----------------------------------------------------	-------------------------------------------

RNAV (GPS) RWY 6

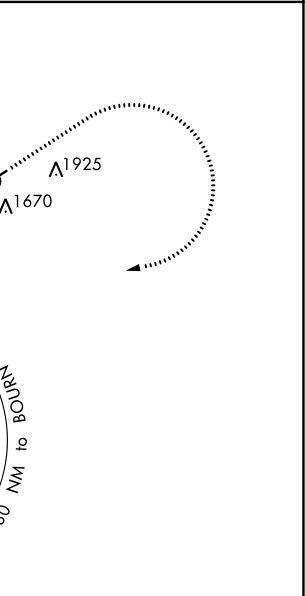
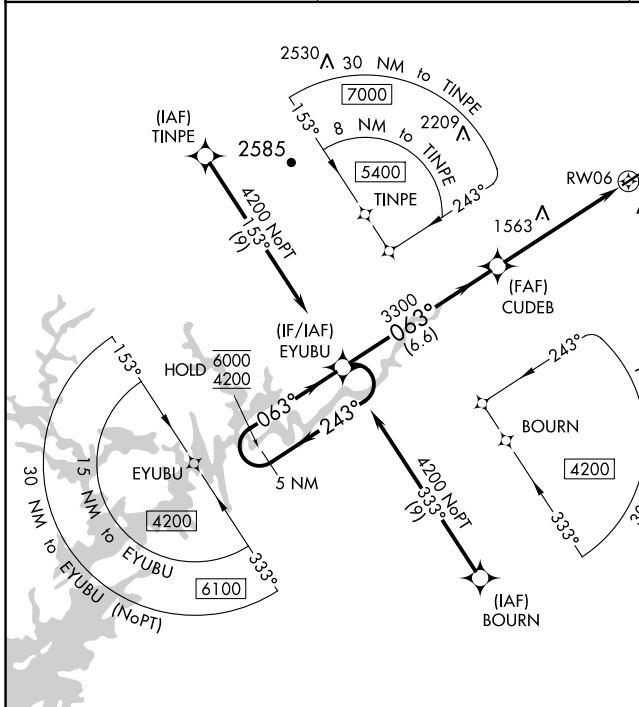
HABERSHAM COUNTY (AJR)

RNP APCH - GPS.

⚠ Circling Rwy 24 NA at night. Rwy 6 helicopter visibility reduction below 3/4 SM NA. For uncompensated Baro-VNAV systems, LNAV/VNAV NA below -17°C or above 54°C.

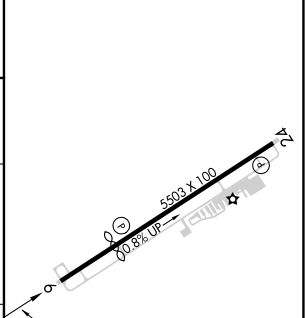
MISSED APPROACH: Climb to 2000 then climbing right turn to 4200 direct EYUBU and hold.

AWOS-3 119.175	ATLANTA CENTER 134.8 379.95	UNICOM 122.7 (CTAF) 0
--------------------------	---------------------------------------	---------------------------------

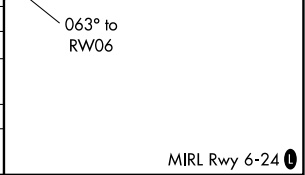


ELEV 1448	D	TDZE 1446
-----------	----------	-----------

5 NM Holding Pattern	VGSI and RNAV glidepath not coincident (VGSI Angle 3.25/TCH 45).	2000	4200	EYUBU
6000	← 243°	→ 063°	3300	1.5 NM to RW06
4200			3300	RW06
GP 3.10°			6.6 NM	4.1 NM
TCH 55			1.5 NM	



CATEGORY	A	B	C	D
LPV DA		1710-7/8	264 (300-7/8)	
LNAV/VNAV DA		1824-1	378 (400-1)	
LNAV MDA	1980-1	534 (600-1)	1980-1 1/2	534 (600-1 1/2)
C CIRCLING	2100-1 652 (700-1)	2280-1 1/4 832 (900-1 1/4)	2280-2 1/2 832 (900-2 1/2)	2280-2 3/4 832 (900-2 3/4)



SE-4, 08 AUG 2024 to 05 SEP 2024

SE-4, 08 AUG 2024 to 05 SEP 2024