

BORRN SIX DEPARTURE (RNAV)

SC-5, 03 OCT 2024 to 31 OCT 2024

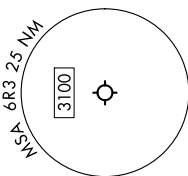
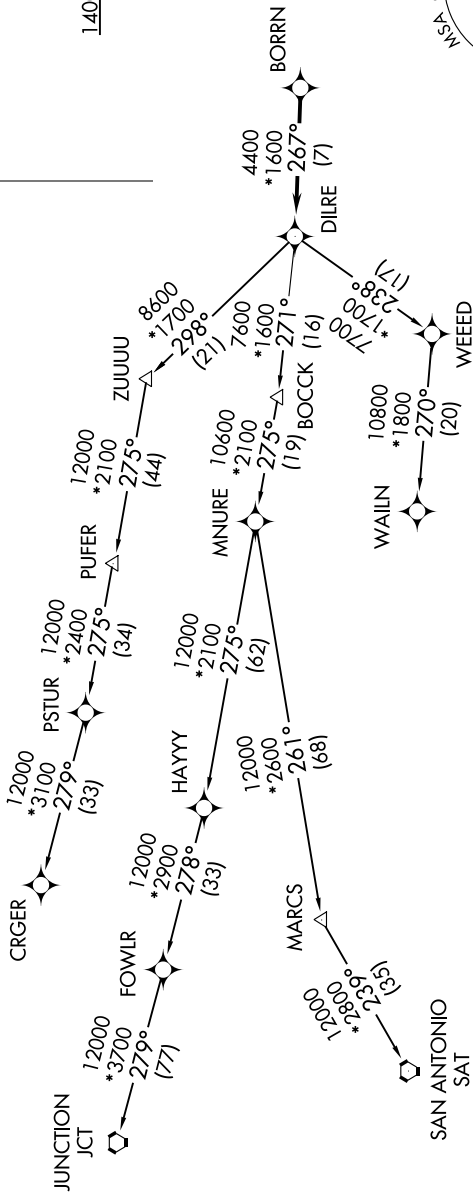
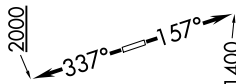
AWOS-3
119.325
CTAF
123.0
HOUSTON DEP CON
119.7 281.4

TAKEOFF MINIMUMS

Rwy 16: Standard with minimum
climb of 500'/NM to 660.
Rwy 34: Standard with minimum
climb of 500'/NM to 1000.

RNAV 1 - DME/DME/IRU or GPS.
RADAR required.

**TOP ALTITUDE:
ASSIGNED BY ATC**



NOTE: Chart not to scale.

NOTE: CRGR-TRANSITION ATC assigned only
for aircraft departing 54T, AXH, EFD, GLS,
HPY, IWS, LBX, LVJ, SGR, TME, T00, T41.

(NARRATIVE ON FOLLOWING PAGE)

BORRN SIX DEPARTURE (RNAV)

SC-5, 03 OCT 2024 to 31 OCT 2024