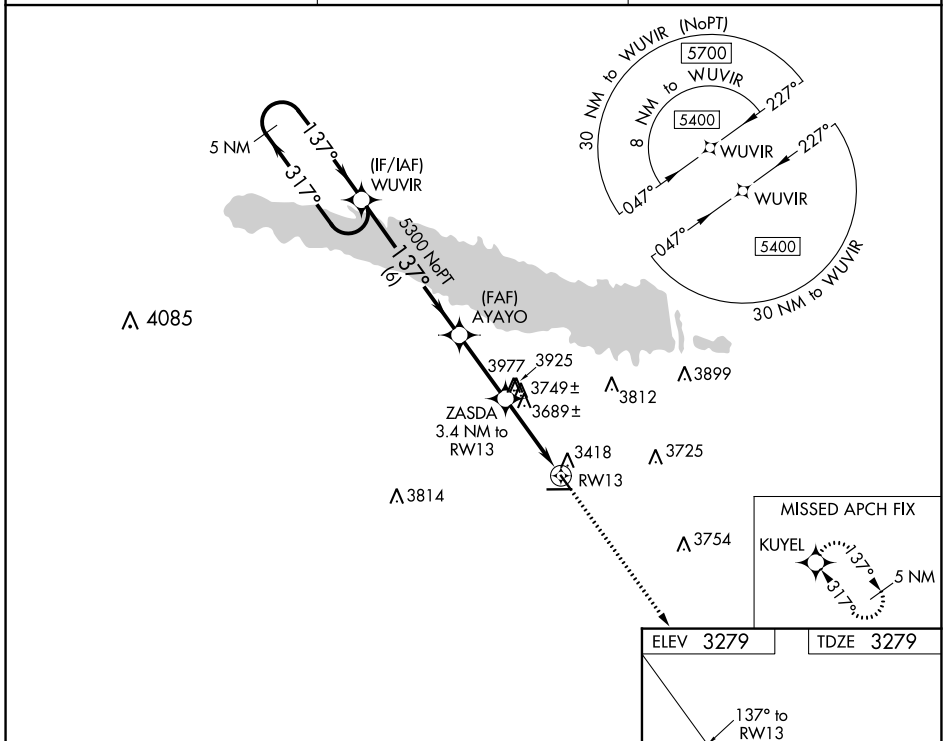


WAAS CH <b>93531</b> <b>W13A</b>	APP CRS <b>137°</b>	Rwy Idg <b>3700</b> TDZE <b>3279</b> Apt Elev <b>3279</b>
--	------------------------	---

# RNAV (GPS) RWY 13

SEARLE FLD (OGA)

RNP APCH.		MISSED APPROACH: Climb to 5500 direct KUYEL and hold.
AWOS-3 <b>121.275</b>	DENVER CENTER <b>132.7 397.85</b>	UNICOM <b>122.8 (CTAF) 0</b>



NC-2, 03 OCT 2024 to 31 OCT 2024

NC-2, 03 OCT 2024 to 31 OCT 2024

5 NM Holding Pattern		WUVIR		VGSi and descent angles not coincident (VGSi Angle 3.50/TCH 40).		5500 KUYEL	
5400 ← 317°		→ 137°		137°		↑	
5300		AYAYO		ZASDA		KUYEL	
4460		3.4 NM to RWY 13		1.8 NM to RWY 13		3200 X 40	
6 NM		2.8 NM		1.6 NM		5102 X 75	
CATEGORY		A		B		C	
LP MDA		3940-1		661 (700-1)		NA	
LNAV MDA		4000-1		721 (800-1)		NA	
CIRCLING		4000-1		721 (800-1)		NA	
						MRL Rwy 8-26 and 13-31 0	