

APP CRS	Rwy Idg	<b>2800</b>
<b>177°</b>	TDZE	<b>1051</b>
	Apt Elev	<b>1051</b>

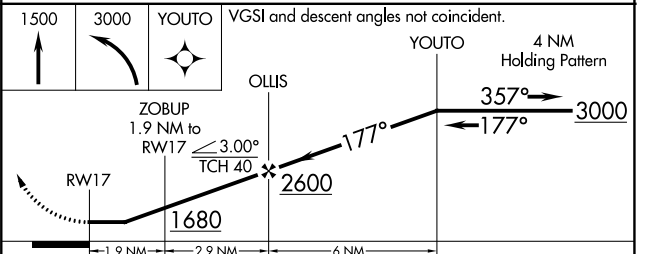
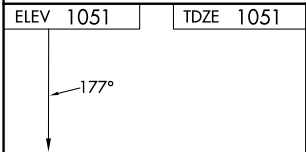
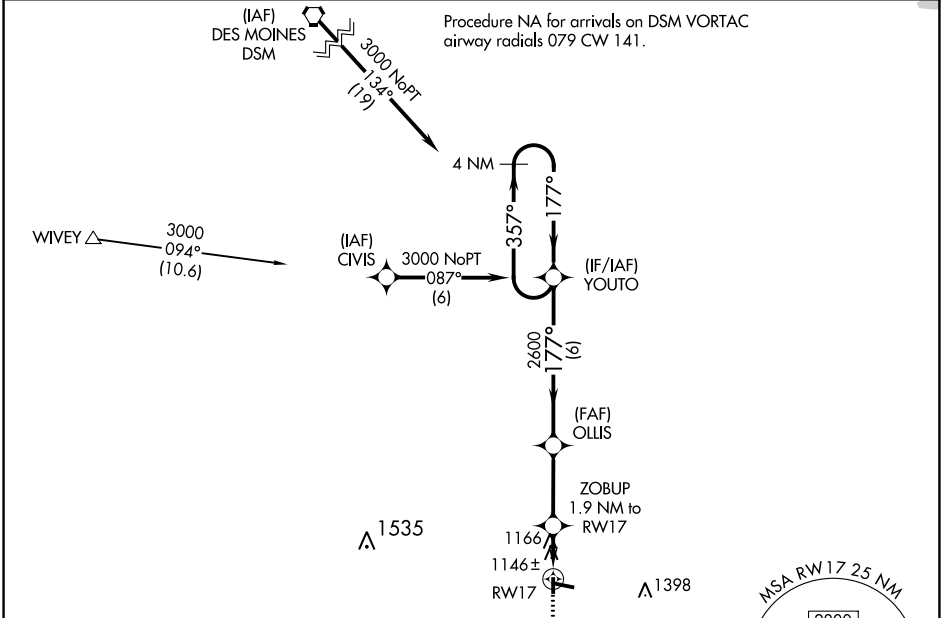
# RNAV (GPS) RWY 17

CHARITON MUNI (CNC)

**⚠** DME/DME RNP-0.3 NA. Helicopter visibility reduction below 1 SM NA. When local altimeter setting not received, use Lamoni altimeter setting and increase all MDA 100 feet. Procedure NA at night.

**⚠** MISSED APPROACH: Climb to 1500 then climbing left turn to 3000 direct YOUTO and hold.

AWOS-3 <b>125.525</b>	DES MOINES APP CON <b>123.9 360.7</b>	UNICOM <b>122.8 (CTAF)</b> <b>📻</b>
--------------------------	--	--



CATEGORY	A	B	C	D
LNAV MDA	1400-1	349 (400-1)		NA
CIRCLING	1540-1	489 (500-1)		NA

NC-3, 31 OCT 2024 to 28 NOV 2024

NC-3, 31 OCT 2024 to 28 NOV 2024