

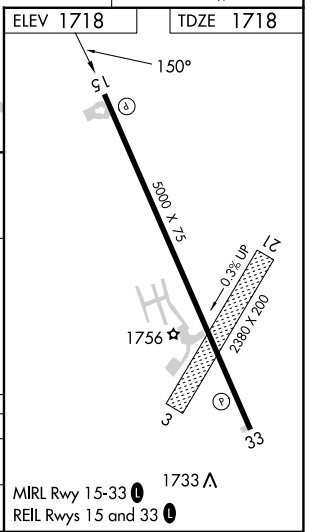
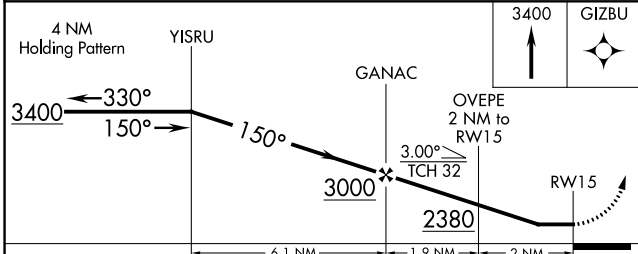
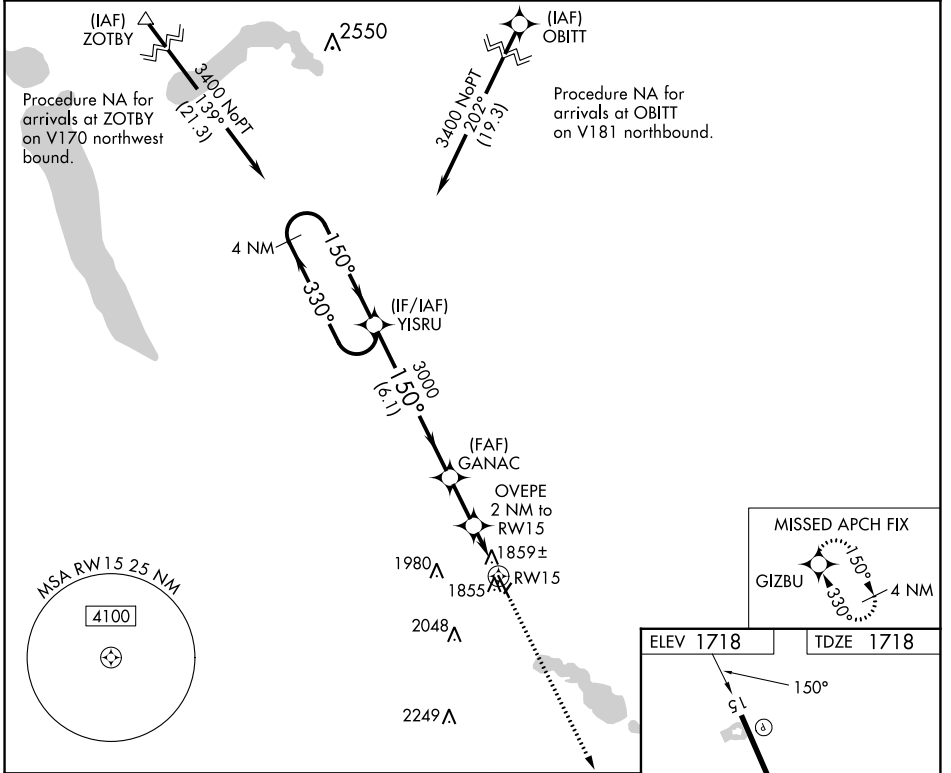
APP CRS	Rwy Idg	<b>5000</b>
<b>150°</b>	TDZE	<b>1718</b>
	Apt Elev	<b>1718</b>

# RNAV (GPS) RWY 15

MADISON MUNI (MDS)

RNP APCH - GPS.		MISSED APPROACH: Climb to 3400 direct GIZBU and hold.	
<p>▼ Circling NA to Rwys 3 and 21. Rwy 15 helicopter visibility reduction below 3/4 SM NA.</p> <p>▲ When local altimeter setting not received, use Brookings altimeter setting: increase all MDAs 60 feet and visibility LNAV and Circling Cat C and D 1/4 SM.</p>			

AWOS-3 <b>118.35</b>	MINNEAPOLIS CENTER <b>132.05 317.4</b>	GCO <b>121.725</b>	UNICOM <b>122.8 (CTAF) 0</b>
-------------------------	-------------------------------------------	-----------------------	---------------------------------



CATEGORY	A	B	C	D
LNAV MDA	2120-1	402 (500-1)	2120-1 1/8	402 (500-1 1/8)
CIRCLING	2180-1	462 (500-1)	2400-2	2400-2 1/4
			682 (700-2)	682 (700-2 1/4)

NC-1, 31 OCT 2024 to 28 NOV 2024

NC-1, 31 OCT 2024 to 28 NOV 2024