

WAAS CH <b>63216</b> <b>W15A</b>	APP CRS <b>151°</b>	Rwy Idg TDZE Apt Elev	<b>5500</b> <b>236</b> <b>236</b>
--	------------------------	-----------------------------	---

# RNAV (GPS) RWY 15

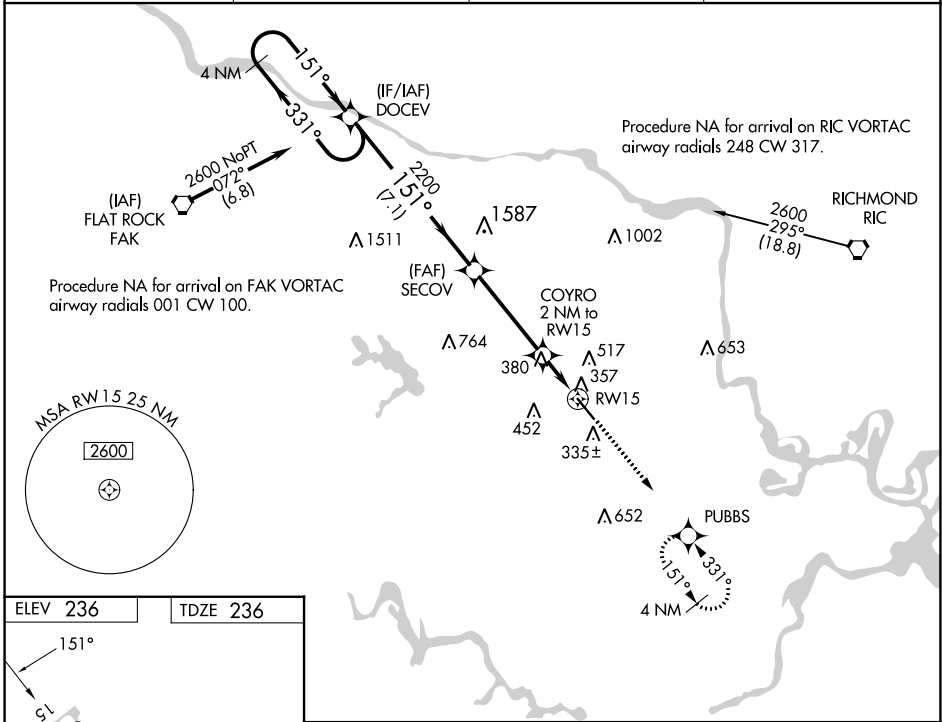
RICHMOND EXEC/CHESTERFIELD COUNTY (F'CI)

RNP APCH.

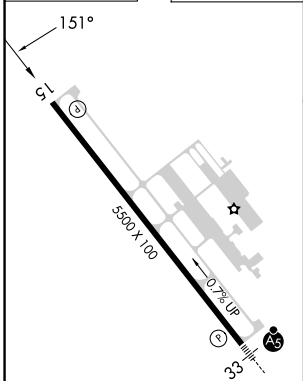
**NA** For uncompensated Baro-VNAV systems, LNAV/VNAV NA below -15°C or above 54°C. When local altimeter setting not received, use Richmond Intl altimeter setting and increase all DA 36 feet, and all MDA 40 feet, increase LNAV/VNAV all Cats visibility ¼ mile. VDP and Baro-VNAV NA when using Richmond Intl altimeter setting.

MISSED APPROACH: Climb to 2000 direct PUBBS and hold.

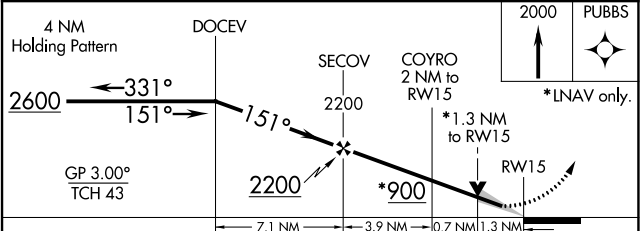
AWOS-3PT <b>128.625</b>	POTOMAC APP CON <b>126.75 307.2</b>	CLNC DEL <b>124.6</b>	UNICOM <b>123.05 (CTAF)</b>
----------------------------	--	--------------------------	--------------------------------



ELEV 236	TDZE 236
----------	----------



REIL Rwy 15 **1**  
HIRL Rwy 15-33 **1**



CATEGORY	A	B	C	D
LPV DA	486-1 250 (300-1)			
LNAV/VNAV DA	692-1½ 456 (500-1½)			
LNAV MDA	680-1 444 (500-1)	680-1⅓ 444 (500-1⅓)	680-1½ 444 (500-1½)	680-1½ 444 (500-1½)