

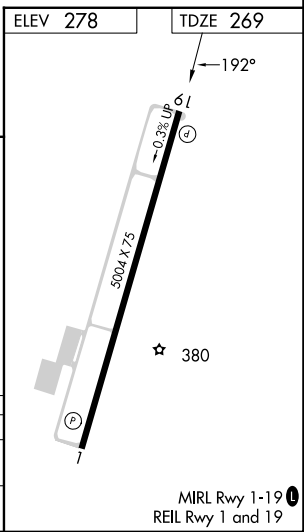
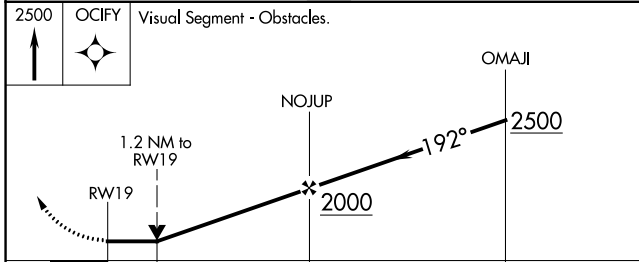
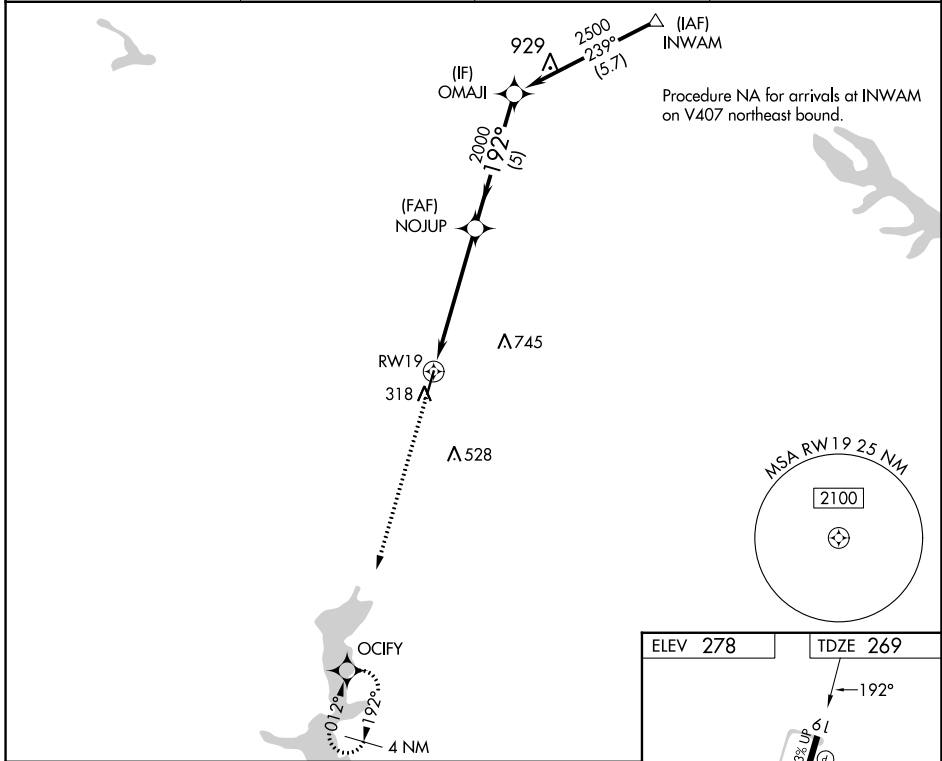
APP CRS	Rwy Idg	5004
192°	TDZE	269
	Apt Elev	278

RNAV (GPS) RWY 19

MINDEN (MNE)

RNP APCH.	<p>▼ Rwy 19 helicopter visibility reduction below 3/4 SM NA. When local altimeter setting not received, use Barksdale AFB altimeter setting; increase all MDAs 80 feet: increase visibility LNAV Cats C/D 1/2 SM and Circling Cats C/D 1/4 SM.</p>	MISSED APPROACH: Climb to 2500 direct OCIFY and hold.

AWOS-3PT 119.325	SHREVEPORT APP CON 123.75 360.725	GCO 135.075	UNICOM 122.8 (CTAF) 1
----------------------------	---	-----------------------	--



CATEGORY	A	B	C	D
LNAV MDA	820-1	551 (600-1)	820-1 5/8	551 (600-1 5/8)
CIRCLING	820-1	542 (600-1)	1060-2 1/4 782 (800-2 1/4)	1060-2 1/2 782 (800-2 1/2)

SC-4, 03 OCT 2024 to 31 OCT 2024

SC-4, 03 OCT 2024 to 31 OCT 2024

MIRL Rwy 1-19 **1**
REIL Rwy 1 and 19