

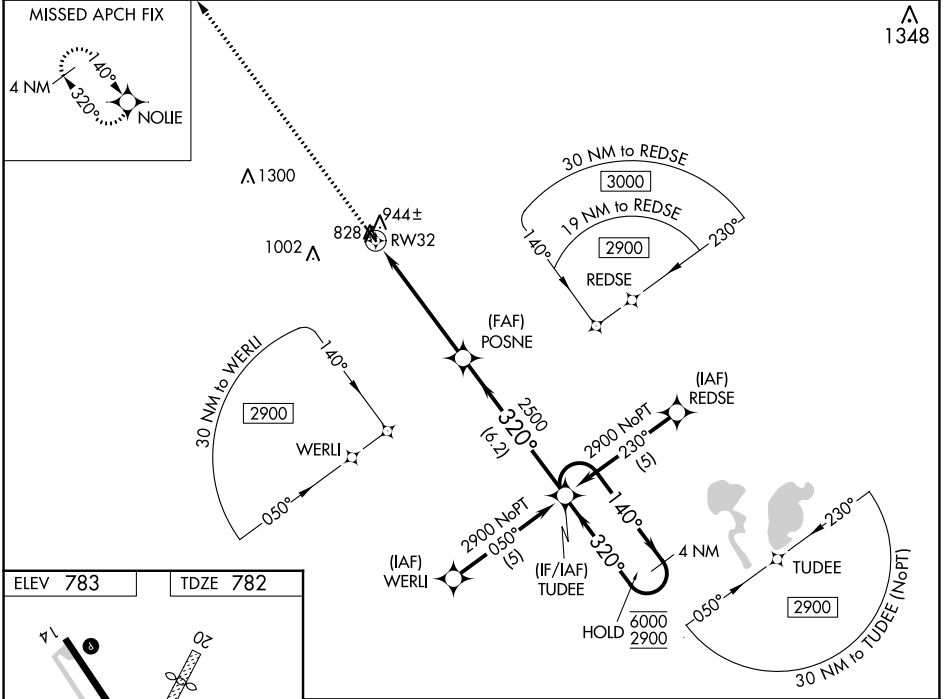
WAAS CH <b>70413</b> <b>W32A</b>	APP CRS <b>320°</b>	Rwy Idg TDZE <b>782</b> Apt Elev <b>783</b>	<b>3899</b>
--	------------------------	---	-------------

# RNAV (GPS) RWY 32

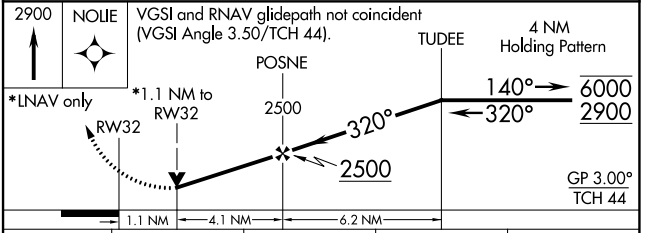
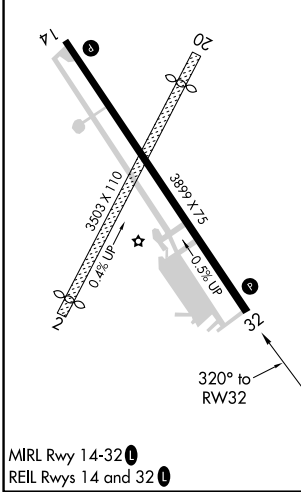
CHILLICOTHE MUNI (CHT)

RNP APCH.	<p>Baro-VNAV and VDP NA when using Kansas City Intl altimeter setting. Rwy 32 helicopter visibility reduction below 3/4 SM NA. For uncompensated Baro-VNAV systems, LNAV/VNAV NA below -16°C or above 54°C. When local altimeter setting not received, use Kansas City Intl altimeter setting and increase LPV DA to 1329 and LNAV/VNAV DA to 1335 and all MDA 200 feet, increase all LPV visibilities 3/4 SM and LNAV/VNAV visibilities 1/2 SM.</p>	MISSED APPROACH: Climb to 2900 direct NOLIE and hold.
-----------	--	---

AWOS-3 <b>118.175</b>	KANSAS CITY CENTER <b>125.25 235.975</b>	UNICOM <b>122.8 (CTAF) 1</b>
--------------------------	---	---------------------------------



ELEV 783	TDZE 782
----------	----------



CATEGORY		A	B	C	D
LPV DA		1148-1¼	366 (400-1¼)		NA
LNAV/VNAV DA		1154-1½	372 (400-1½)		NA
LNAV MDA		1200-1	418 (500-1)		NA

NC-3, 31 OCT 2024 to 28 NOV 2024

NC-3, 31 OCT 2024 to 28 NOV 2024