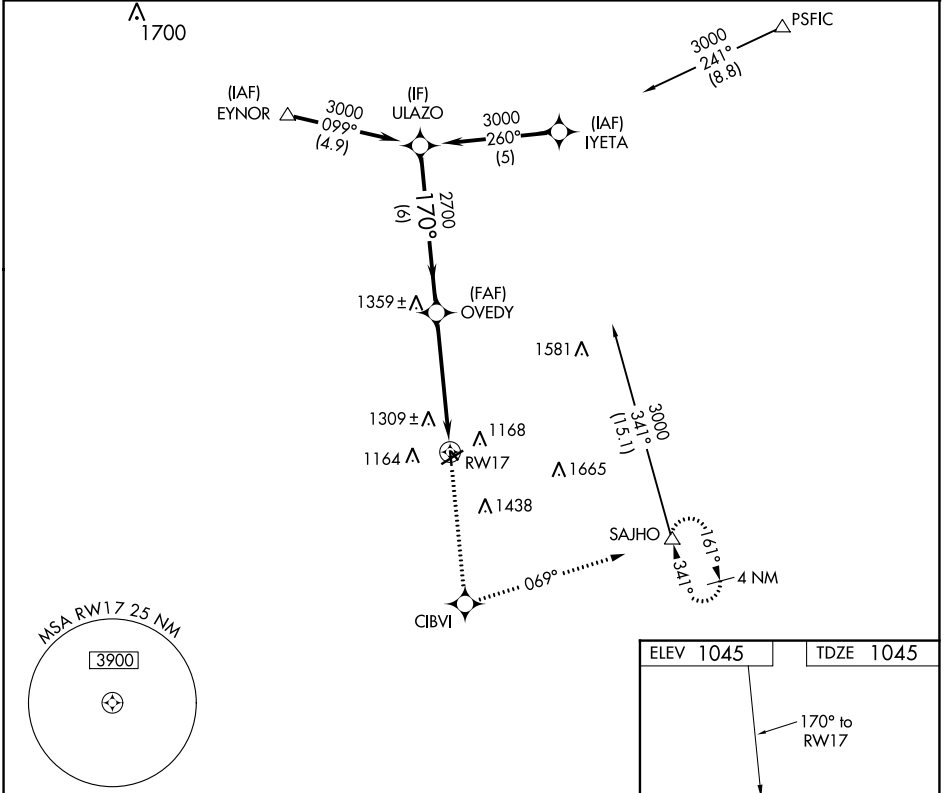


APP CRS 170°	Rwy Idg 2901
	TDZE 1045
	Apt Elev 1045

RNAV (GPS) RWY 17

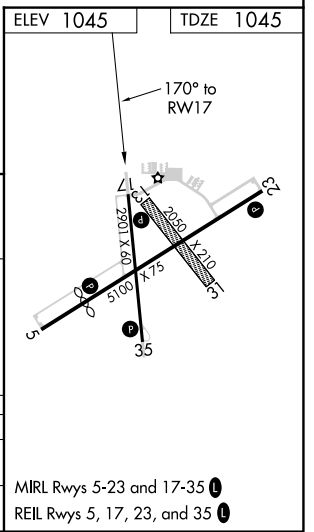
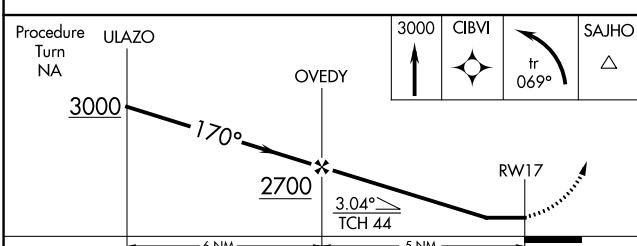
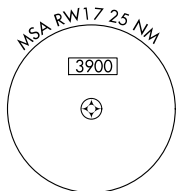
RED OAK MUNI (RDK)

<p>⚠ DME/DME RNP-0.3 NA. Visibility reduction by helicopters NA. When local altimeter setting not received, use Shenandoah altimeter setting and increase all MDA 60 feet, and increase Circling Cat B visibility ¼ mile. Circling NA to Rwys 13 and 31.</p>	<p>MISSED APPROACH: Climb to 3000 direct CIBVI and left turn via track 069° to SAJHO and hold.</p>
<p>AWOS-3P 123.925</p>	<p>OMAHA APP CON 124.5 263.0</p>
<p>UNICOM 122.8 (CTAF)</p>	



NC-3, 31 OCT 2024 to 28 NOV 2024

NC-3, 31 OCT 2024 to 28 NOV 2024



Procedure Turn NA	3000	CIBVI	SAJHO
	170°	tr	069°
	2700		
	6 NM	5 NM	
CATEGORY	A	B	C
INAV MDA	1600-1	555 (600-1)	NA
CIRCLING	1620-1 575 (600-1)	1780-1 735 (800-1)	NA

MIRL Rwy 5-23 and 17-35
REIL Rwy 5, 17, 23, and 35