

(ZACHH4.ZACHH) 23334

AL-6039 (FAA)

DALLAS-FORT WORTH INTL (DFW)

ZACHH FOUR DEPARTURE (RNAV)

DALLAS-FORT WORTH, TEXAS

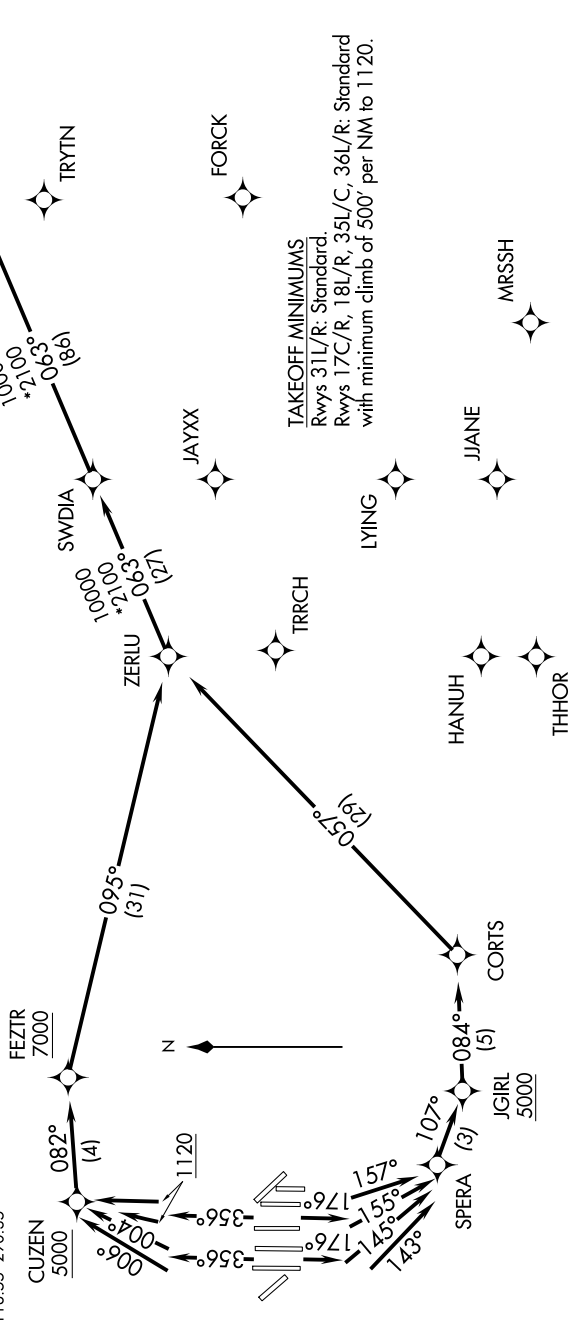
SC-2, 11 JUL 2024 to 08 AUG 2024

TOP ALTITUDE:
 RWYS 31L/R: 5000
 RWYS 17C/R, 18L/R,
 35L/C, 36L/R: 10000

RNAV 1 - DME/DME/IRU or GPS.
 RADAR required.

NOTE: For use by turbojet aircraft only.
 NOTE: Non-RNAV capable props: file and expect DALLAS or GARLAND DEPARTURE.
 NOTE: RNAV capable props: file and expect the SWABR RNAV SID.

D-ATIS DEP
 135.925
 CLNC DEL
 128.25
 CPDLC
 GND CON
 121.65 121.8 (EAST)
 121.85 (WEST)
 DFW TOWER
 126.55 127.5 (EAST)
 124.15 134.9 (WEST)
 REGIONAL DEP CON
 118.55 290.35



(NARRATIVE ON FOLLOWING PAGE)

NOTE: Chart not to scale.

SC-2, 11 JUL 2024 to 08 AUG 2024

ZACHH FOUR DEPARTURE (RNAV)

(ZACHH4.ZACHH) 08SEP22

DALLAS-FORT WORTH, TEXAS

DALLAS-FORT WORTH INTL (DFW)