

WSTEX TWO DEPARTURE (RNAV)

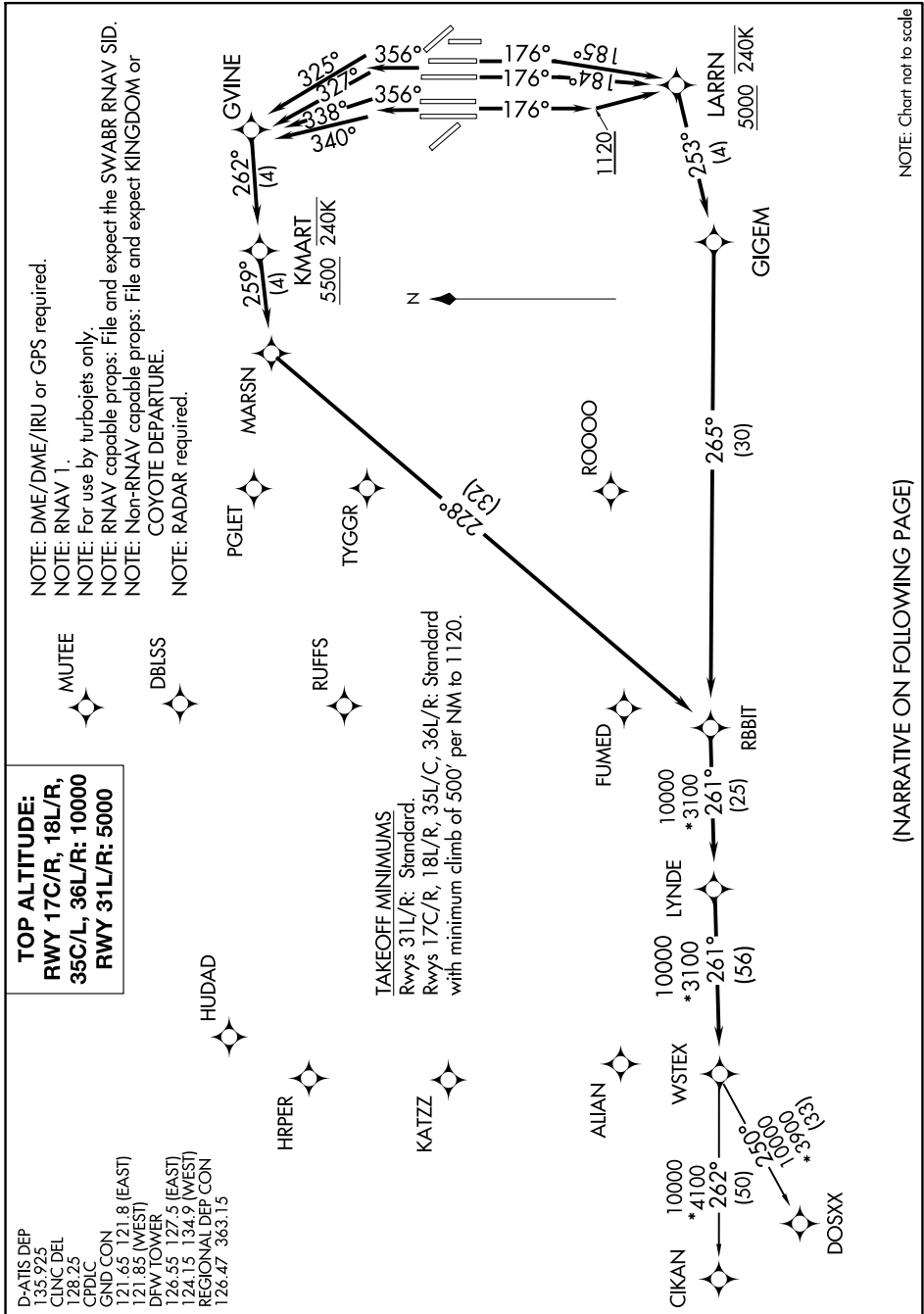
SC-2, 11 JUL 2024 to 08 AUG 2024

TOP ALTITUDE:
 RWY 17C/R, 18L/R, 35C/L, 36L/R: 10000
 RWY 31L/R: 5000

D-ATIS DEP 135.925
 CLNC DEL 128.25
 CPDLC
 GND CON 121.65 121.8 (EAST)
 121.85 (WEST)
 DFW TOWER 126.55 127.5 (EAST)
 124.15 134.9 (WEST)
 REGIONAL DEP CON 126.47 363.15

NOTE: DME/DME/IRU or GPS required.
 NOTE: RNAV 1.
 NOTE: For use by turbojets only.
 NOTE: RNAV capable props: File and expect the SWABR RNAV SID.
 NOTE: Non-RNAV capable props: File and expect KINGDOM or COYOTE DEPARTURE.
 NOTE: RADAR required.

TAKEOFF MINIMUMS
 Rwy: 31L/R: Standard.
 Rwys 17C/R, 18L/R, 35L/C, 36L/R: Standard
 with minimum climb of 500' per NM to 1120.



NOTE: Chart not to scale

(NARRATIVE ON FOLLOWING PAGE)

SC-2, 11 JUL 2024 to 08 AUG 2024

WSTEX TWO DEPARTURE (RNAV)