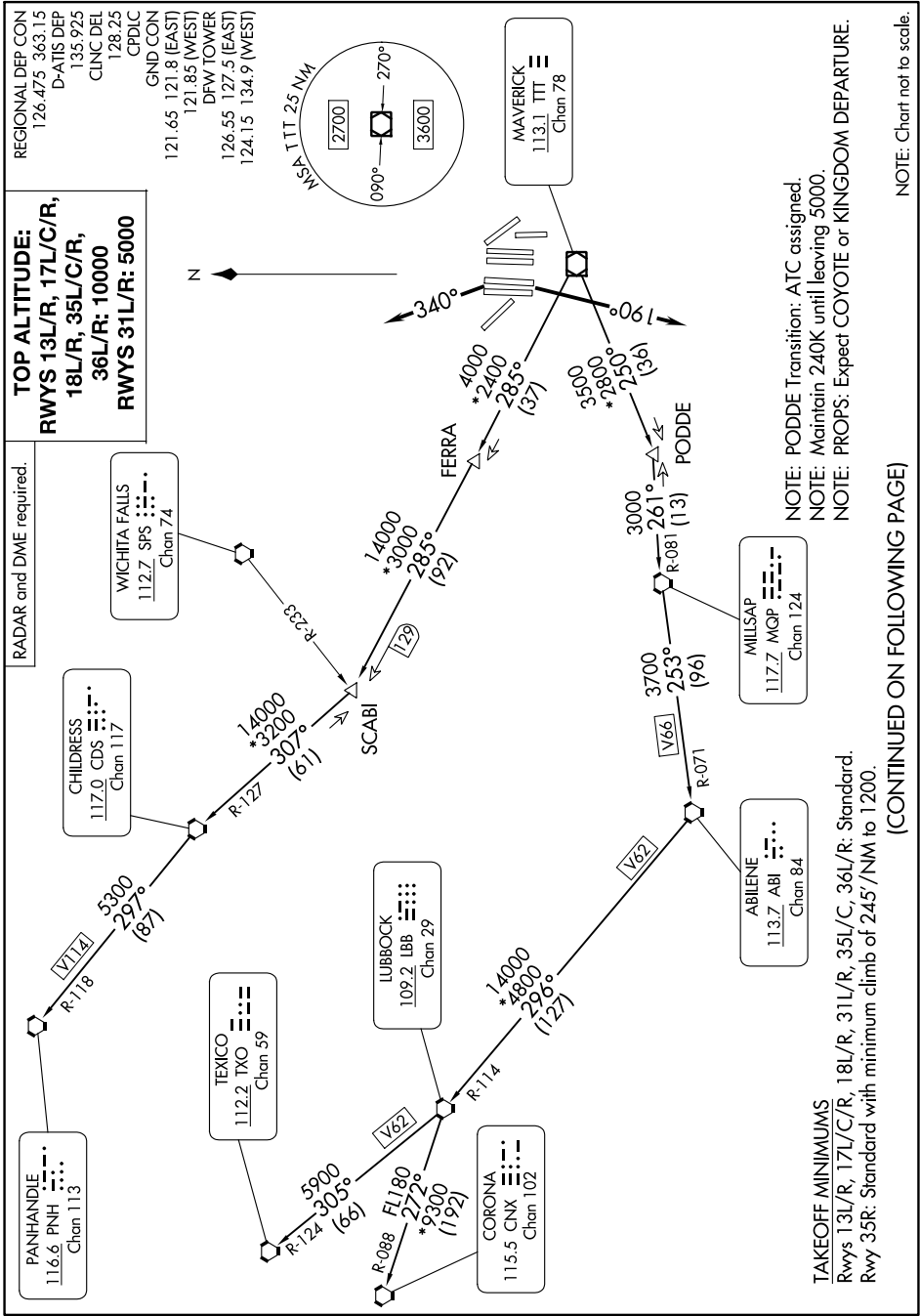


WORTH ONE DEPARTURE

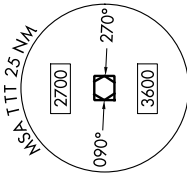
SC-2, 11 JUL 2024 to 08 AUG 2024



TOP ALTITUDE:
RWYS 13L/R, 17L/C/R,
18L/R, 35L/C/R,
36L/R: 10000
RWYS 31L/R: 5000

RADAR and DME required.

REGIONAL DEP CON
 126.475 363.15
 D-ATIS DEP
 135.925
 CLINIC DEL
 128.25
 CPDLC
 GND CON
 121.65 121.8 (EAST)
 121.85 (WEST)
 DFW TOWER
 126.55 127.5 (EAST)
 124.15 134.9 (WEST)



NOTE: PODDE Transition: ATC assigned.
 NOTE: Maintain 240K until leaving 5000.
 NOTE: PROPS: Expect COYOTE or KINGDOM DEPARTURE.

TAKEOFF MINIMUMS
 Rwys 13L/R, 17L/C/R, 18L/R, 31L/R, 35L/C, 36L/R: Standard.
 Rwy 35R: Standard with minimum climb of 245'/NM to 1200.

(CONTINUED ON FOLLOWING PAGE)

NOTE: Chart not to scale.

WORTH ONE DEPARTURE

SC-2, 11 JUL 2024 to 08 AUG 2024