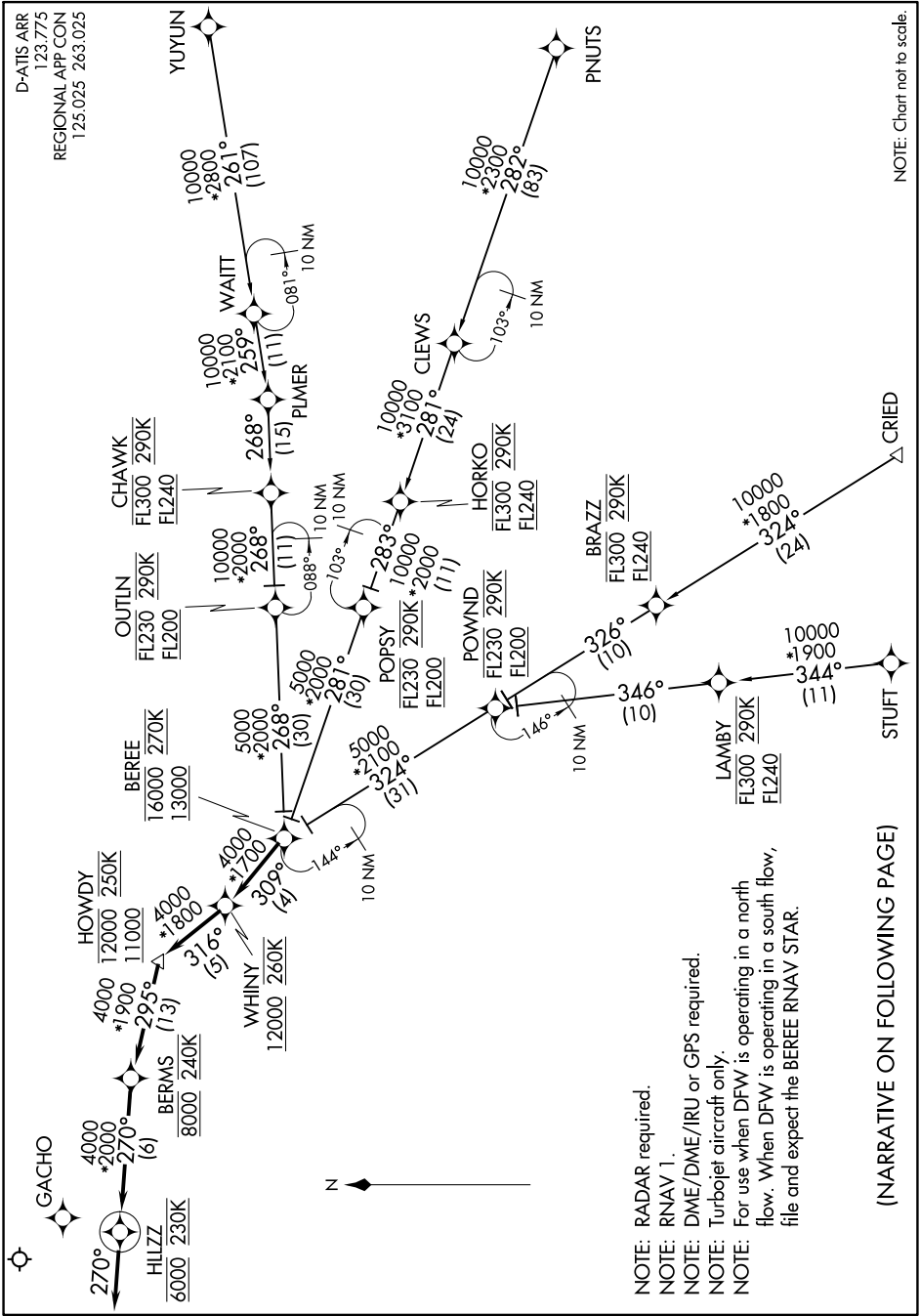


# WHINY FOUR ARRIVAL (RNAV)

D-ATIS ARR  
123.775  
REGIONAL APP CON  
125.025 263.025

SC-2, 08 AUG 2024 to 05 SEP 2024



NOTE: Chart not to scale.

- NOTE: RADAR required.
- NOTE: RNAV 1.
- NOTE: DME/DME/IRU or GPS required.
- NOTE: Turbojet aircraft only.
- NOTE: For use when DFW is operating in a north flow. When DFW is operating in a south flow, file and expect the BEREE RNAV STAR.

(NARRATIVE ON FOLLOWING PAGE)

SC-2, 08 AUG 2024 to 05 SEP 2024

# WHINY FOUR ARRIVAL (RNAV)