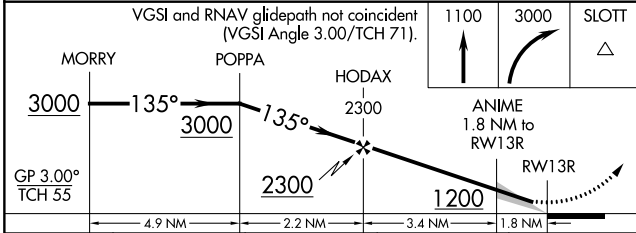
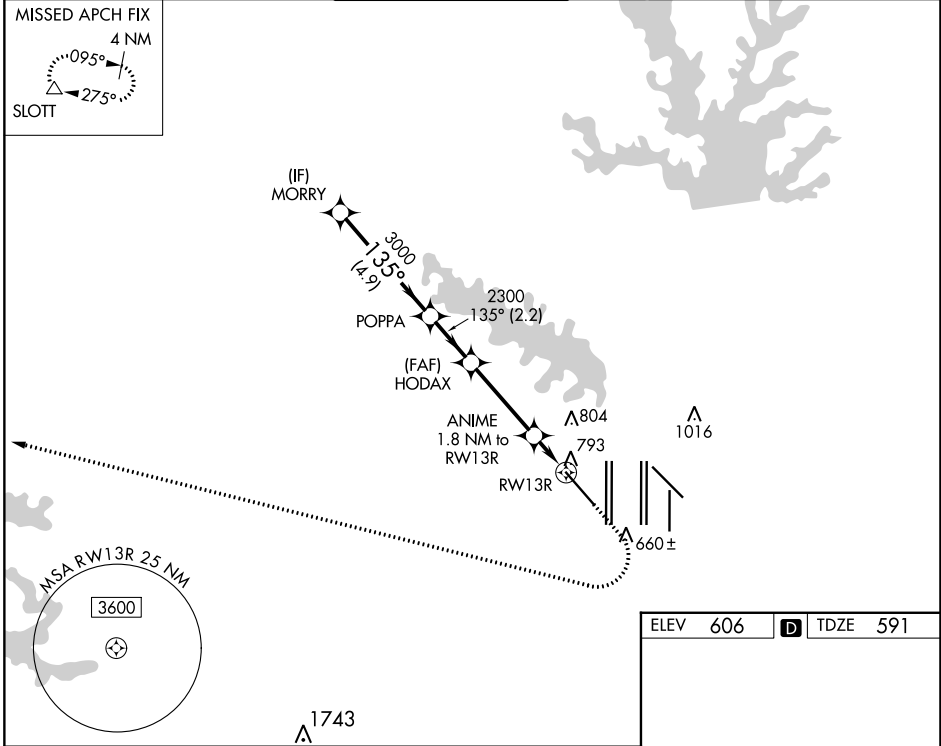


WAAS CH 72742 W13A	APP CRS 135°	Rwy Idg 9300 TDZE 591 Apt Elev 606
--	------------------------	---

RNAV (GPS) Y RWY 13R

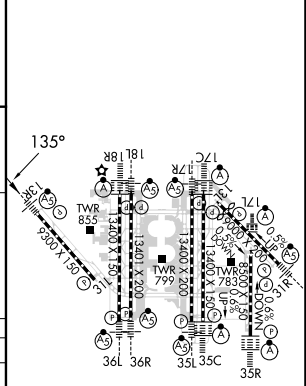
DALLAS-FORT WORTH INTL (DFW)

RNP APCH - GPS. ▼ For uncompensated Baro-VNAV systems, LNAV/VNAV NA below -8° C or above 54° C. For inop ALS, increase LNAV/VNAV all Cats visibility to RVR 6000 and LNAV Cat C/D visibility to 1/2 SM.		MALS R ⊕	MISSED APPROACH: Climb to 1100 then climbing right turn to 3000 direct SLOTT and hold.		
D-ATIS ARR 123.775 DEP 135.925	REGIONAL APP CON 133.15 118.1	DFW TOWER 126.55 127.5 EAST 124.15 134.9 WEST	GND CON 121.65 121.8 EAST 121.85 WEST	CLNC DEL 128.25	CPDLC



CATEGORY	A	B	C	D
LPV DA		791/18	200 (200-1/2)	
LNAV/VNAV DA		991/35	400 (400-3/8)	
LNAV MDA	1080/24	489 (500-1/2)	1080/50	489 (500-1)

ELEV 606	D TDZE 591
----------	-------------------



HIRL all Rws
REIL Rws 13L and 31L
TDZ/CL all Rws except 13L and 31L

SC-2, 11 JUL 2024 to 08 AUG 2024

SC-2, 11 JUL 2024 to 08 AUG 2024