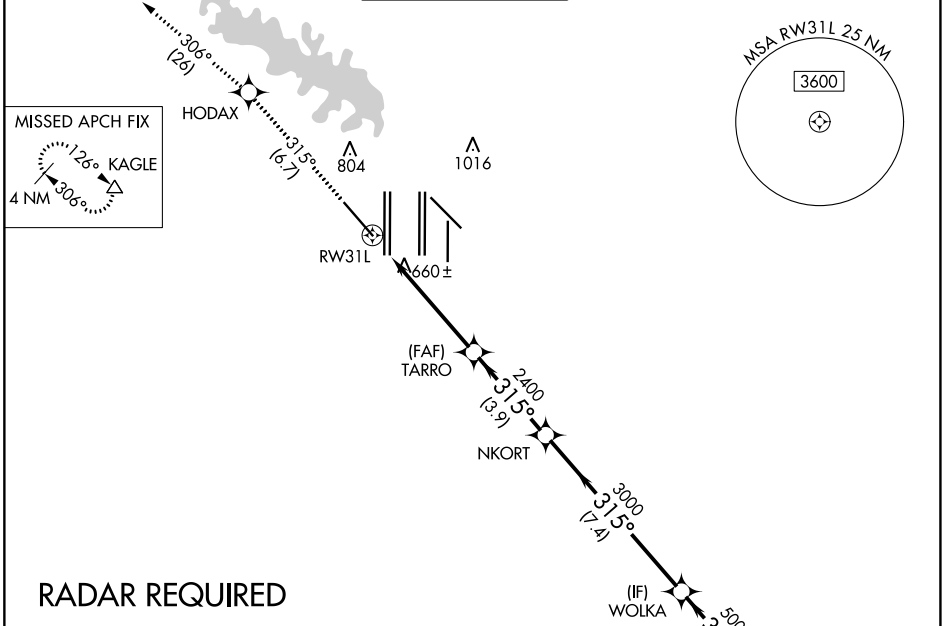


APP CRS 315°	Rwy Idg 9300 TDZE 581 Apt Elev 607
------------------------	---

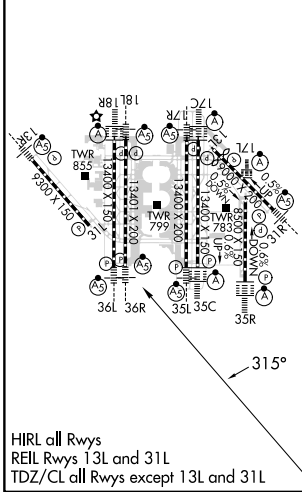
RNAV (RNP) Z RWY 31L

DALLAS-FORT WORTH INTL (DFW)

<p>▼ For uncompensated Baro-VNAV systems, procedure NA below -4°C (25°F) or above 54°C (130°F). Simultaneous approach authorized with Rwy 31R. GPS Required. Use of FD or AP providing RNAV track guidance required during simultaneous operations.</p>		<p>MISSED APPROACH: Climb to 3000 on track 315° to HODAX and on track 306° to KAGLE and hold.</p>			
D-ATIS ARR 123.775 DEP 135.925	REGIONAL APP CON 118.425 127.075 119.4	DFW TOWER 126.55 127.5 EAST 124.15 134.9 WEST	GND CON 121.65 121.8 EAST 121.85 WEST	CLNC DEL 128.25	CPDLC



ELEV 607	D	TDZE 581
-----------------	----------	-----------------



HIRL all Rwys
REIL Rws 13L and 31L
TDZ/CL all Rws except 13L and 31L

3000	HODAX	tr 315°	KAGLE	tr 306°	VGSI and RNAV glidepath not coincident (VGSI Angle 3.13/TCH 72).
		RWY 31L		TARRO	WOLKA
				NKORT	ZUREK
				2400	5000
				3000	5000
				2400	GP 3.00°
				5.6 NM	TCH 54
				3.9 NM	
				7.4 NM	
				4 NM	
CATEGORY	A	B	C	D	
RNP 0.30 DA	951/60 370 (400-1¼)				

AUTHORIZATION REQUIRED

SC-2, 08 AUG 2024 to 05 SEP 2024

SC-2, 08 AUG 2024 to 05 SEP 2024