

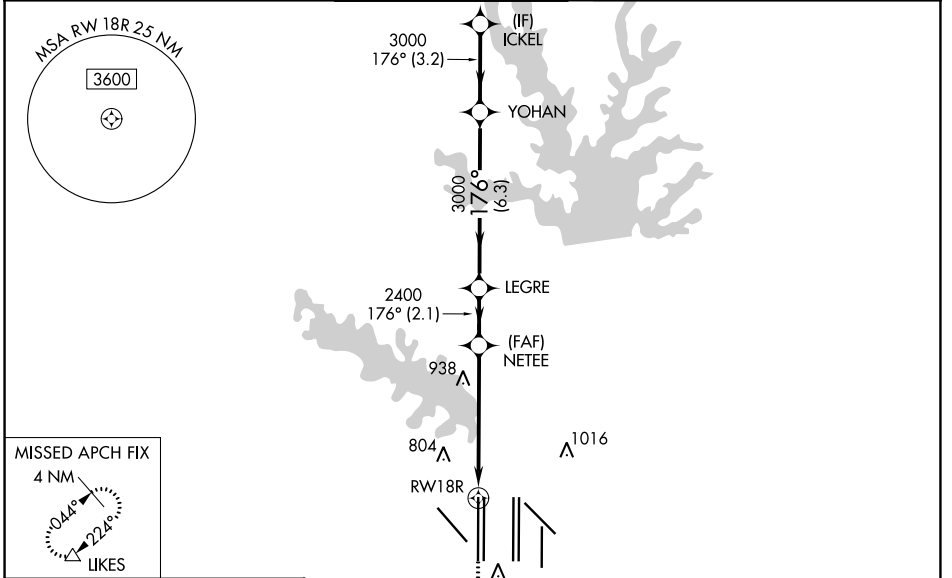
| | | |
|--|------------------------|--|
| WAAS CH 99407 W18B | APP CRS 176° | Rwy Idg 13400 TDZE 606 Apt Elev 606 |
|--|------------------------|--|

RNAV (GPS) RWY 18R

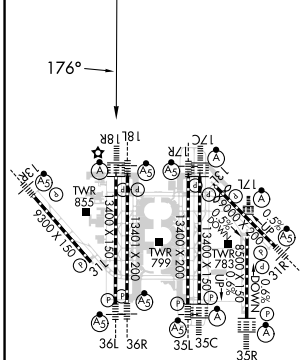
DALLAS-FORT WORTH INTL (DFW)

| | | | |
|--|--|-------------|--|
| RADAR required for procedure entry. RNP APCH. | | ALSIF-2 | MISSED APPROACH: Climb to 1100 then climbing right turn to 3000 direct LIKES and hold. |
| <p>▼ Simultaneous approach authorized with Rwy 17L/C/R. For uncompensated Baro-VNAV systems, LNAV/VNAV NA below -4°C or above 54°C. LNAV procedure NA during simultaneous operations. Use of FD or AP providing RNAV track guidance required during simultaneous operations. For inop ALS, increase LNAV/VNAV all Cats visibility to RVR 6000 and LNAV Cats C and D visibility to 1¼ SM.</p> | | | |

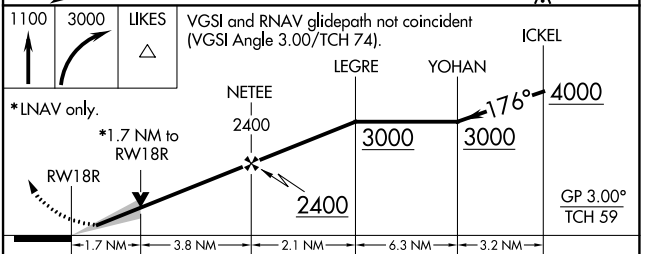
| | | | | | |
|--|------------------------------------|---|--|---------------------------|-------|
| D-ATIS ARR 123.775 DEP 135.925 | REGIONAL APP CON 118.425 | DFW TOWER 126.55 EAST 127.5 WEST 124.15 EAST 134.9 WEST | GND CON 121.65 EAST 121.8 WEST 121.85 WEST | CLNC DEL 128.25 | CPDLC |
|--|------------------------------------|---|--|---------------------------|-------|



| | | |
|-----------------|----------|-----------------|
| ELEV 606 | D | TDZE 606 |
|-----------------|----------|-----------------|



| |
|--|
| HIRL all Rwys REIL Rws 13L and 31L TDZ/CL all Rws except 13L and 31L |
|--|



| | | | | |
|--------------|---------|-------------|-------------|--------------|
| CATEGORY | A | B | C | D |
| LPV DA | 806/18 | | 200 (200-½) | |
| LNAV/VNAV DA | 1012/40 | | 406 (500-¾) | |
| LNAV MDA | 1220/24 | 614 (700-½) | 1220-1⅓ | 614 (700-1⅓) |

SC-2, 11 JUL 2024 to 08 AUG 2024

SC-2, 11 JUL 2024 to 08 AUG 2024