

WAAS CH <b>40008</b> W17B	APP CRS <b>176°</b>	Rwy Idg 8500 TDZE 545 Apt Elev 607
---------------------------------	------------------------	---

# RNAV (GPS) RWY 17L

DALLAS-FORT WORTH INTL (DFW)

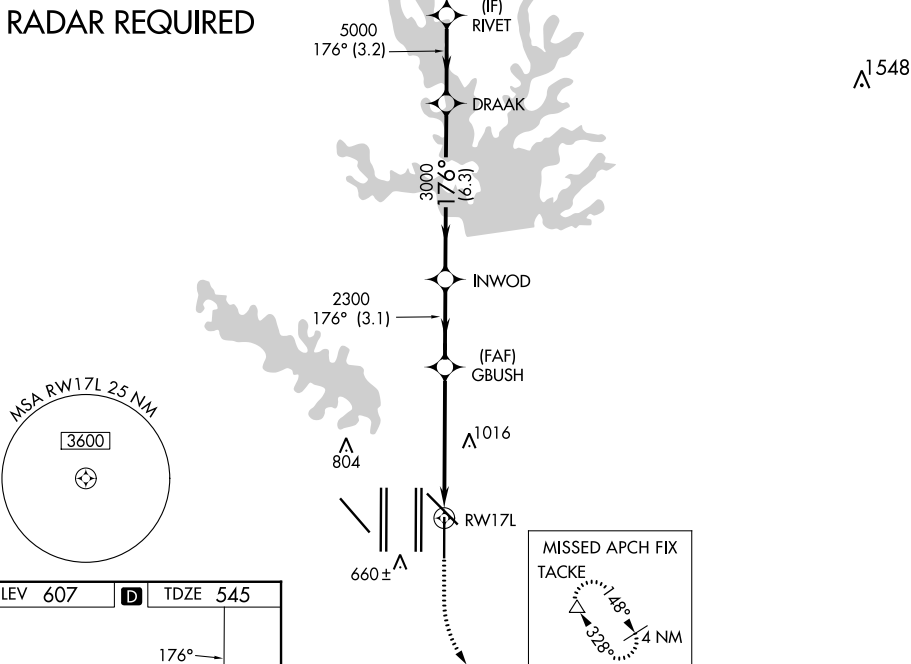
▼ For uncompensated Baro-VNAV systems, LNAV/VNAV NA below -5°C (23°F) or above 54°C (130°F). DME/DME RNP-0.3 NA. Simultaneous approach authorized with Rwy 17C/R and Rwy 18L/R. LNAV procedure NA during simultaneous operations. Use of FD or AP providing RNAV track guidance required during simultaneous operations.



MISSED APPROACH: Climb to 1020 then climbing left turn to 3000 direct TACKE and hold.

D-ATIS ARR <b>123.775</b> DEP <b>135.925</b>	REGIONAL APP CON <b>119.4</b>	DFW TOWER <b>126.55 127.5</b> EAST <b>124.15 134.9</b> WEST	GND CON <b>121.65 121.8</b> EAST <b>121.85</b> WEST	CLNC DEL <b>128.25</b>	CPDLC
--	----------------------------------	---	---	---------------------------	-------

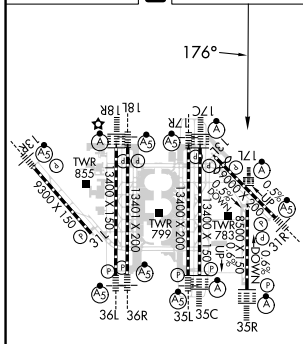
## RADAR REQUIRED



SC-2, 08 AUG 2024 to 05 SEP 2024

SC-2, 08 AUG 2024 to 05 SEP 2024

ELEV <b>607</b>	<b>D</b>	TDZE <b>545</b>
-----------------	----------	-----------------



HIRL all Rwys  
REIL Rwys 13L and 31L  
TDZ/CL all Rwys except 13L and 31L

1020	3000	TACKE	VGSi and RNAV glidepath not coincident (VGSi Angle 3.00/TCH 77).	
			DRAAK	RIVET
*LNAV only.			INWOD	5000
		*2 NM to RWY 17L	GBUSH	5000
			2300	5000
			3000	5000
			176°	5000
				GP 3.00° TCH 56
			2 NM	3.4 NM
			3.1 NM	6.3 NM
			3.2 NM	
CATEGORY	A	B	C	D
LPV DA		745/18	200 (200-½)	
LNAV/VNAV DA		1063/60	518 (500-1¼)	
LNAV MDA	1240/24	695 (700-½)	1240-1½	695 (700-1½)