

KUSSO ONE DEPARTURE (RNAV)

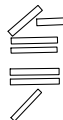
SC-2, 11 JUL 2024 to 08 AUG 2024

D-ATIS DEP
135.925
CLNC DEL
128.25
CPDLC

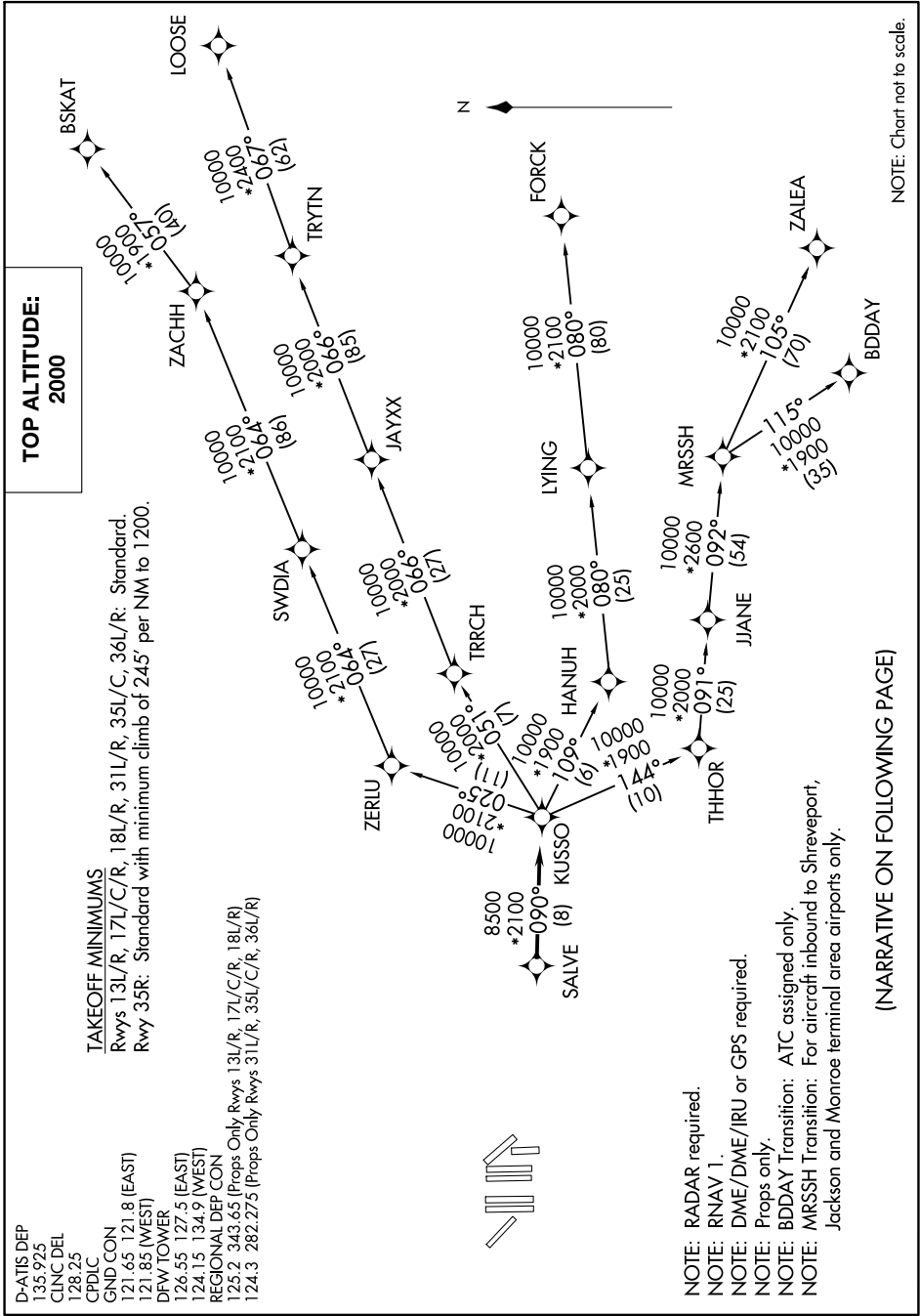
TAKEOFF MINIMUMS

Rwys 13L/R, 17L/C/R, 18L/R, 31L/R, 35L/C, 36L/R: Standard.
Rwy 35R: Standard with minimum climb of 245' per NM to 1200.

GND CON
121.65 121.8 (EAST)
121.85 (WEST)
DFW TOWER
126.55 127.5 (EAST)
124.15 134.9 (WEST)
REGIONAL DEP CON
125.2 343.65 (Props Only Rwys 13L/R, 17L/C/R, 18L/R)
124.3 282.275 (Props Only Rwys 31L/R, 35L/C/R, 36L/R)



**TOP ALTITUDE:
2000**



NOTE: RADAR required.
 NOTE: RNAV 1.
 NOTE: DME/DME/IRU or GPS required.
 NOTE: Props only.
 NOTE: BDDAY Transition: ATC assigned only.
 NOTE: MRSSH Transition: For aircraft inbound to Shreveport, Jackson and Monroe terminal area airports only.

(NARRATIVE ON FOLLOWING PAGE)

NOTE: Chart not to scale.

SC-2, 11 JUL 2024 to 08 AUG 2024