

LOC/DME I-RRR 110.9 Chan 46	APP CRS 311°	Rwy Idg TDZE Apt Elev	8373 523 607
---	------------------------	-----------------------------	---

ILS or LOC RWY 31R

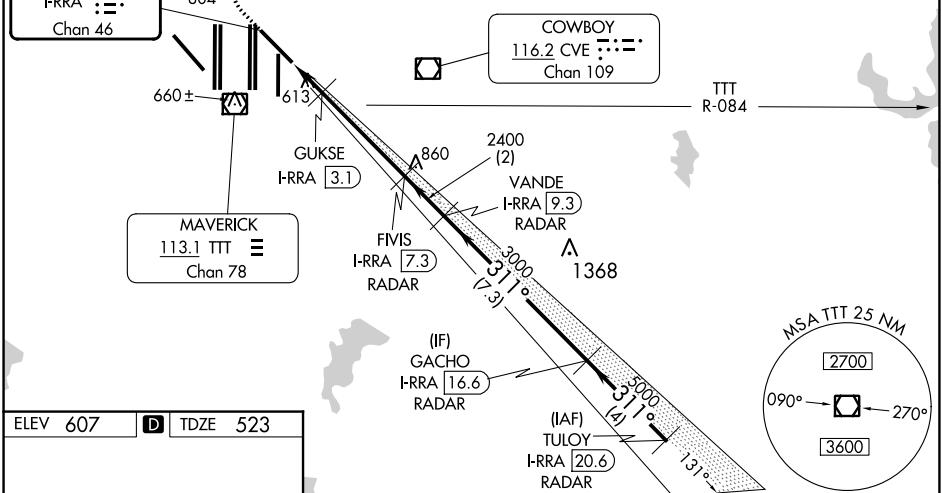
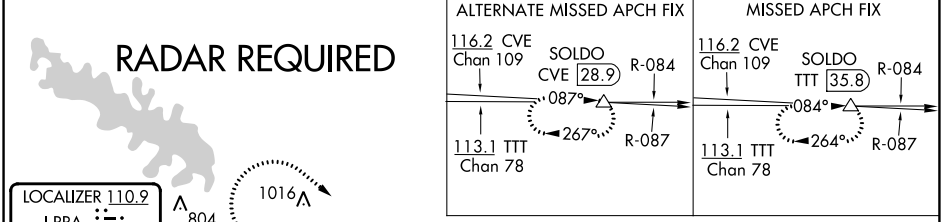
DALLAS-FORT WORTH INTL (DFW)

Simultaneous approach authorized. DME required.
 For inop ALS increase S-LOC 31R GUKSE FIX minimums
 Cat C/D visibility to RVR 5500.

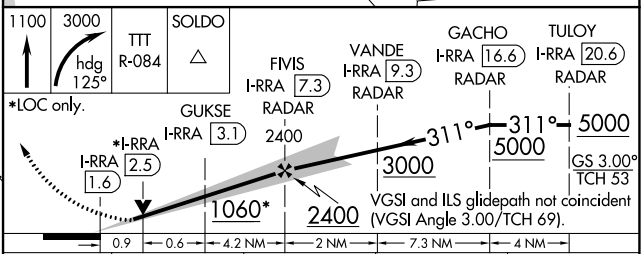
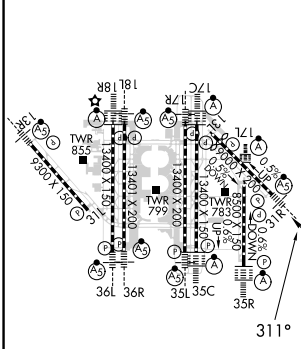


MISSED APPROACH: Climb to 1100 then climbing
 right turn to 3000 on heading 125° and TTT VOR/
 DME R-084 to SOLD0/TTT 35.8 DME and hold.

D-ATIS ARR 123.775 DEP 135.925	REGIONAL APP CON 135.5 125.2	DFW TOWER 126.55 127.5 EAST 124.15 134.9 WEST	GND CON 121.65 121.8 EAST 121.85 WEST	CLNC DEL 128.25	CPDLC
--	--	---	---	---------------------------	-------



ELEV 607	D	TDZE 523
-----------------	----------	-----------------



CATEGORY	A	B	C	D
S-ILS 31R	723/18 200 (200-½)			
S-LOC 31R	1060/24	537 (500-½)	1060/55	537 (500-1¼)
GUKSE FIX MINIMUMS				
S-LOC 31R	880/24	357 (300-½)	880/30	357 (300-¾)

HIRL all Rwy					
REIL Rwy 13L and 31L					
TDZ/CL all Rwy except 13L and 31L					
FAF to MAP 5.8 NM					
Knots	60	90	120	150	180
Min:Sec	5:48	3:52	2:54	2:19	1:56

SC-2, 11 JUL 2024 to 08 AUG 2024

SC-2, 11 JUL 2024 to 08 AUG 2024