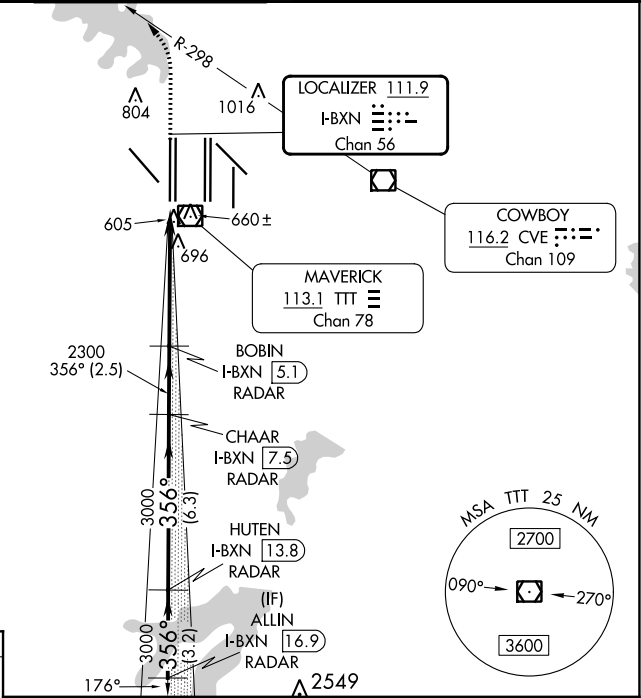
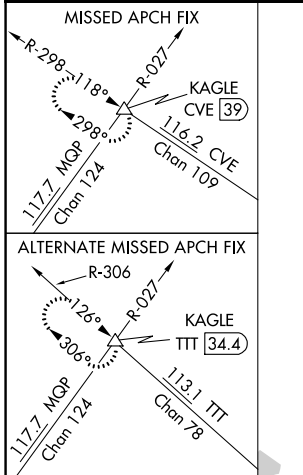


LOC/DME I-BXN <b>111.9</b> Chan <b>56</b>	APP CRS <b>356°</b>	Rwy Idg TDZE <b>588</b> Apt Elev <b>606</b>	<b>13400</b>
---	------------------------	---	--------------

# ILS RWY 36L (SA CAT II)

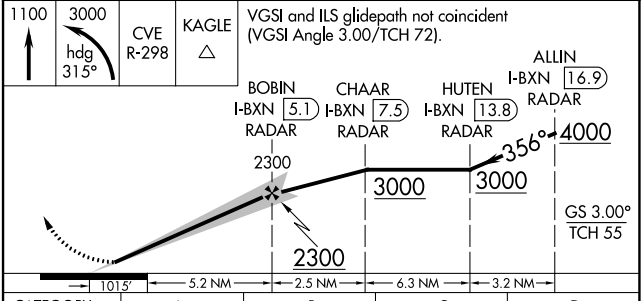
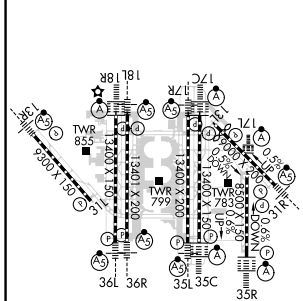
DALLAS-FORT WORTH INTL (DFW)

<b>DME or RADAR required.</b> Reduced Lighting: Requires specific OPSPEC, MSPEC, or LOA approval and use of autoland or HUD to touchdown.		<b>MALSR</b> 		<b>MISSED APPROACH:</b> Climb to 1100 then climbing left turn to 3000 on heading 315° and CVE VOR/DME R-298 to KAGLE INT/ CVE VOR/DME 39 DME and hold.		
<b>D-ATIS</b> ARR <b>123.775</b> DEP <b>135.925</b>	<b>REGIONAL APP CON</b> <b>118.425</b>	<b>DFW TOWER</b> <b>126.55 127.5 EAST</b> <b>124.15 134.9 WEST</b>		<b>GND CON</b> <b>121.65 121.8 EAST</b> <b>121.85 WEST</b>	<b>CLNC DEL</b> <b>128.25</b>	<b>CPDLC</b>



## RADAR REQUIRED

ELEV <b>606</b>	<b>D</b>	TDZE <b>588</b>
-----------------	----------	-----------------



CATEGORY	A	B	C	D
S-ILS 36L	RA 107/12 100 DA 688			

## SA CATEGORY II ILS - SPECIAL AIRCREW & AIRCRAFT CERTIFICATION REQUIRED

SC-2, 11 JUL 2024 to 08 AUG 2024

SC-2, 11 JUL 2024 to 08 AUG 2024