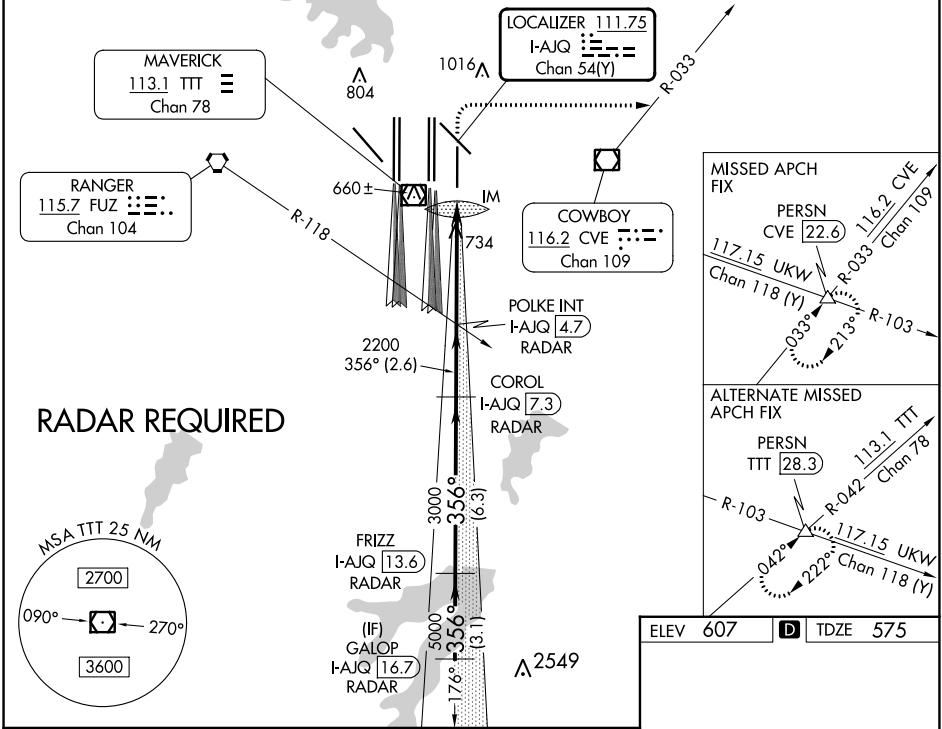


LOC/DME I-AJQ 111.75 Chan 54(Y)	APP CRS 356°	Rwy Idg TDZE Apt Elev 8500 575 607
--	------------------------	--

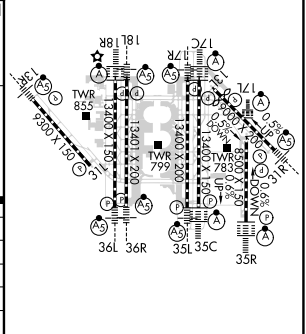
ILS RWY 35R (CAT II & III)

DALLAS-FORT WORTH INTL (DFW)

Simultaneous approach authorized with Rwy 36L/R and Rwy 35L/C. DME required.		ALSF-2 	MISSED APPROACH: Climb to 1040 then climbing right turn to 3000 on heading 090° and CVE VOR/DME R-033 to PERSN/CVE 22.6 DME and hold.		
D-ATIS ARR 123.775 DEP 135.925	REGIONAL APP CON 119.4	DFW TOWER 126.55 127.5 EAST 124.15 134.9 WEST	GND CON 121.65 121.8 EAST 121.85 WEST	CLNC DEL 128.25	CPDLC



GALOP I-AJQ 16.7 RADAR	FRIZZ I-AJQ 13.6 RADAR	COROL I-AJQ 7.3 RADAR	POLKE INT I-AJQ 4.7 RADAR	1040 3000	CVE R-033	PERSN
5000	5000	3000	2200	IM 671		
GS 3.00° TCH 58	356°	3000	2200			
VGSI and ILS glidepath not coincident (VGSI Angle 3.00/TCH 73).						
3.1 NM			6.3 NM		2.6 NM	
A		B		C		D
S-ILS 35R	CAT II RA 94/12		100 DA 675			
S-ILS 35R	CAT IIIa		RVR 07			
S-ILS 35R	CAT IIIb		RVR 06			
S-ILS 35R	CAT IIIc		NA			



CATEGORY II & III ILS - SPECIAL AIRCREW & AIRCRAFT CERTIFICATION REQUIRED

HIRL all Rwys
 REL Rwys 13L and 31L
 TDZ/CL all Rwys except 13L, and 31L

SC-2, 11 JUL 2024 to 08 AUG 2024

SC-2, 11 JUL 2024 to 08 AUG 2024