

LOC/DME I-VYV 111.9 Chan 56	APP CRS 176°	Rwy Ldg 13400 TDZE 607 Apt Elev 607
---	------------------------	--

ILS RWY 18R (CONVERGING)

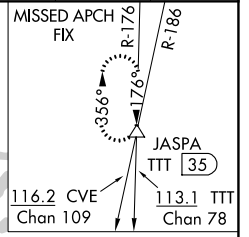
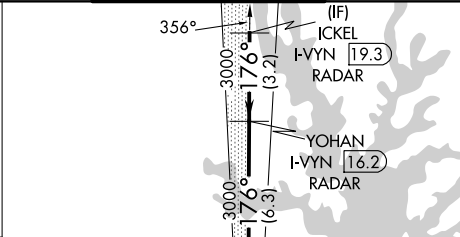
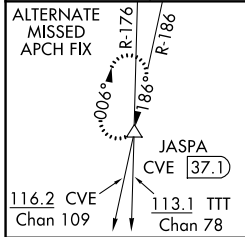
DALLAS-FORT WORTH INTL (DFW)

DME and RADAR required.

ALSF-2 MISSED APPROACH: Climb to 3000 then climb to 4000 on heading 170° and TTT VOR/DME R-176 to JASPA/TTT 35 DME and hold.

Simultaneous approach authorized with CONVERGING ILS RWY 13R, CONVERGING ILS RWY 17C, and CONVERGING ILS 17R.

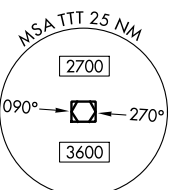
D-ATIS	REGIONAL APP CON	DFW TOWER	GND CON	CLNC DEL	CPDLC
ARR 123.775 DEP 135.925	118.425	126.55 127.5 EAST 124.15 134.9 WEST	121.65 121.8 EAST 121.85 WEST	128.25	



RANGER
115.7 FUZ
Chan 104

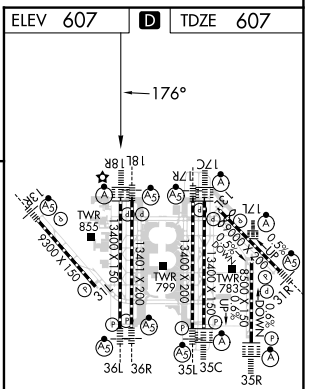
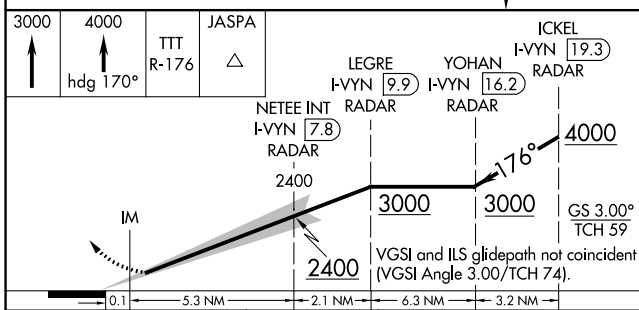
LOCALIZER 111.9
I-VYV
Chan 56

MAVERICK
113.1 TTT
Chan 78



SC-2, 11 JUL 2024 to 08 AUG 2024

SC-2, 11 JUL 2024 to 08 AUG 2024



CATEGORY	A	B	C	D
S-ILS 18R		807/18	200 (200-1/2)	

HIRL all Rwys
REL Rwy 13L and 31L
TDZ/CL all Rwys except 13L and 31L

ILS RWY 18R (CONVERGING)