

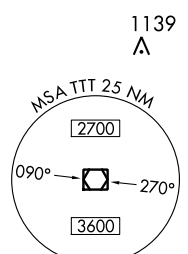
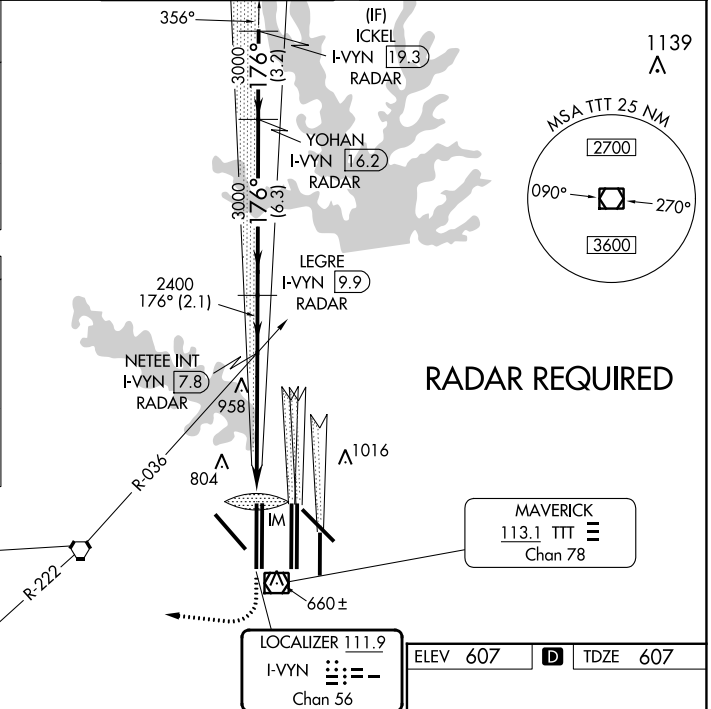
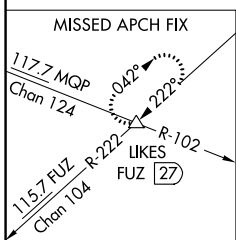
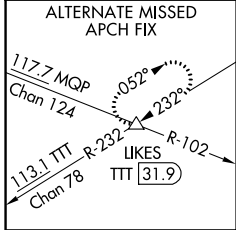
LOC/DME I-VYV 111.9 Chan 56	APP CRS 176°	Rwy Idg TDZE Apt Elev	13400 607 607
---	------------------------	-----------------------------	--

ILS RWY 18R (CAT II & III)

DALLAS-FORT WORTH INTL (DFW)

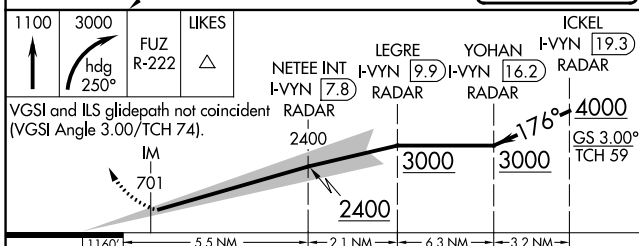
⚠ DME or RADAR required. Simultaneous approach authorized with Rwy 17 L/C/R. **ALSF-2** MISSED APPROACH: Climb to 1100 then climbing right turn to 3000 on heading 250° and FUZ VORTAC R-222 to LIKES INT/FUZ VORTAC 27 DME and hold.

D-ATIS ARR 123.775 DEP 135.925	REGIONAL APP CON 118.425	DFW TOWER 126.55 127.5 EAST 124.15 134.9 WEST	GND CON 121.65 121.8 EAST 121.85 WEST	CLNC DEL 128.25	CPDLC
--	------------------------------------	---	---	---------------------------	-------

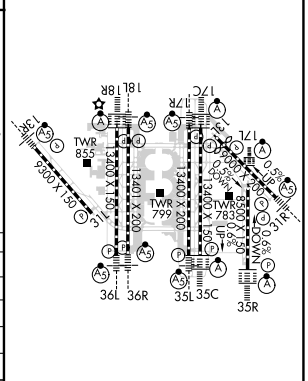


RADAR REQUIRED

RANGER 115.7 FUZ Chan 104	LOCALIZER 111.9 I-VYV Chan 56	ELEV 607	TDZE 607
---------------------------------	--	----------	----------



CATEGORY	A	B	C	D
S-ILS 18R	CAT II	RA 106/12	100 DA 707	
S-ILS 18R		CAT IIIa	RVR 07	
S-ILS 18R		CAT IIIb	RVR 06	
S-ILS 18R		CAT IIIc	NA	



CATEGORY II & III ILS - SPECIAL AIRCREW & AIRCRAFT CERTIFICATION REQUIRED

HIRL all Rwys
REIL Rwys 13L and 31L
TDZ/CL all Rwys except 13L and 31L

SC-2, 11 JUL 2024 to 08 AUG 2024

SC-2, 11 JUL 2024 to 08 AUG 2024