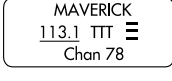
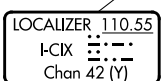
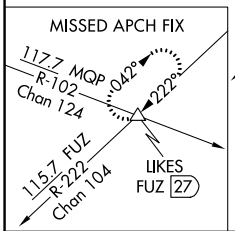
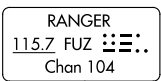
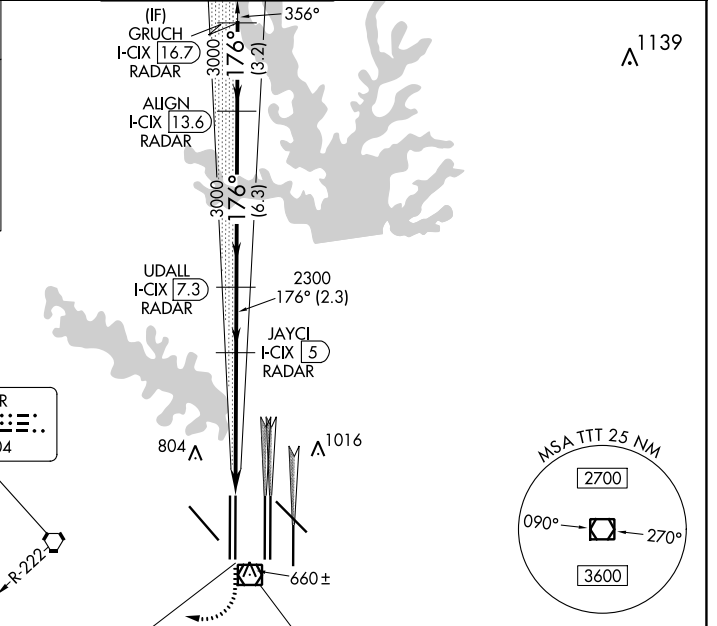
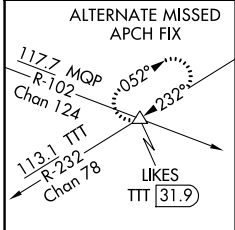


LOC/DME I-CIX <b>110.55</b> Chan <b>42 (Y)</b>	APP CRS <b>176°</b>	Rwy Idg TDZE Apt Elev	<b>13401</b> <b>602</b> <b>606</b>
------------------------------------------------------	------------------------	-----------------------------	------------------------------------------

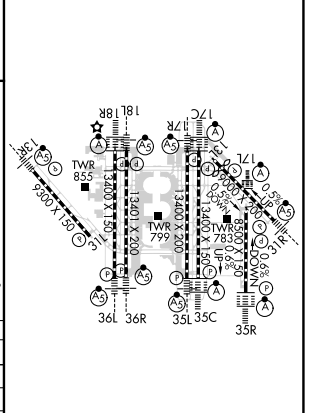
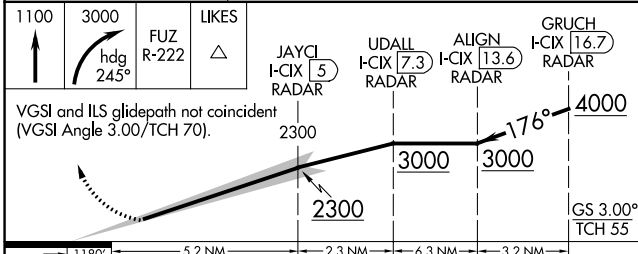
# ILS RWY 18L (SA CAT I & II)

DALLAS-FORT WORTH INTL (DFW)

RADAR required for procedure entry. DME or RADAR required.		MALSR 	MISSED APPROACH: Climb to 1100, then climbing right turn to 3000 on heading 245° and FUZ VORTAC R-222 to LIKES INT/FUZ 27 DME and hold.			
D-ATIS ARR DEP	REGIONAL APP CON	DFW TOWER		GND CON	CLNC DEL	CPDLC
<b>123.775</b> <b>135.925</b>	<b>118.425</b>	<b>126.55</b> <b>127.5</b> <b>124.15</b> <b>134.9</b>	EAST WEST	<b>121.65</b> <b>121.8</b> <b>121.85</b> WEST	<b>128.25</b>	



ELEV 606	TDZE 602
----------	----------



CATEGORY	A	B	C	D
S-ILS 18L	SA CAT I	RA 158/14	150 DA 752	
S-ILS 18L	SA CAT II	RA 115/12	100 DA 702	

## SA CATEGORY I & II ILS - SPECIAL AIRCREW & AIRCRAFT CERTIFICATION REQUIRED

HIRL all Rwys  
REIL Rws 13L and 31L  
TDZ/CL all Rws except 13L and 31L

SC-2, 08 AUG 2024 to 05 SEP 2024

SC-2, 08 AUG 2024 to 05 SEP 2024