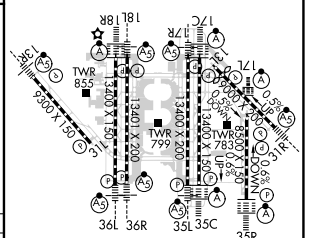
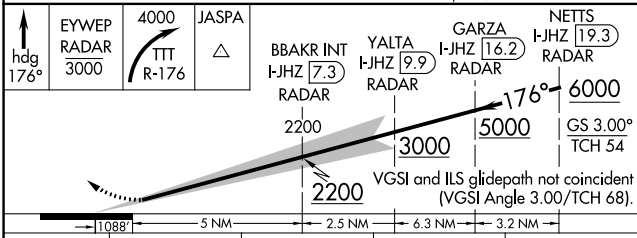
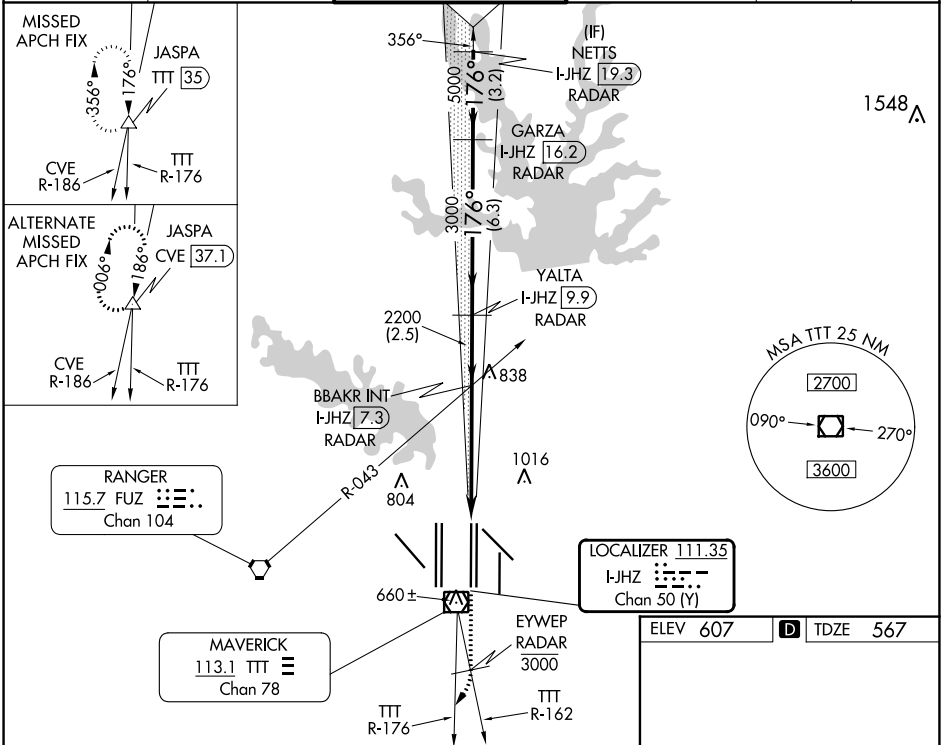


| | | |
|--------------------------------|------------------------|-------------------------|
| LOC/DME I-JHZ 111.35 | APP CRS 176° | Rwy Idg 13400 |
| Chan 50 (Y) | TDZE 567 | Apt Elev 607 |

ILS RWY 17R (SA CAT I & CAT II)

DALLAS-FORT WORTH INTL (DFW)

| | | | | | |
|---|------------------------------------|---|---|---------------------------|-------|
| DME and RADAR required. | | MALSR | MISSED APPROACH: Climb on heading 176° to cross EYWEP/RADAR at or below 3000, then climbing right turn to 4000 on TTT VOR/DME R-176 to JASPA/TTT 35 DME and hold. | | |
| ▼ SA Cat I: Requires specific OPSPEC, MSPEC, or LOA approval and use of HUD to DH. SA Cat II: Reduced lighting; requires specific OPSPEC, MSPEC, or LOA approval and use of Autoland or HUD to touchdown. Simultaneous approach authorized with Rwy 17L, 18L/R. | | AS | | | |
| D-ATIS ARR 123.775 DEP 135.925 | REGIONAL APP CON 127.075 | DFW TOWER 126.55 127.5 EAST 124.15 134.9 WEST | GND CON 121.65 121.8 EAST 121.85 WEST | CLNC DEL 128.25 | CPDLC |



| CATEGORY | A | B | C | D |
|-----------|-----------|-----------|------------|---|
| S-ILS 17R | SA CAT I | RA 160/14 | 150 DA 717 | |
| S-ILS 17R | SA CAT II | RA 98/12 | 100 DA 667 | |

HIRL all Rwys
REIL Rwy 13L and 31L
TDZ/CL all Rwy except 13L and 31L

SA CATEGORY I & II ILS SPECIAL AIRCREW & AIRCRAFT CERTIFICATION REQUIRED