

FORCK THREE DEPARTURE (RNAV)

AL-6039 (FAA)

DALLAS-FORT WORTH, TEXAS

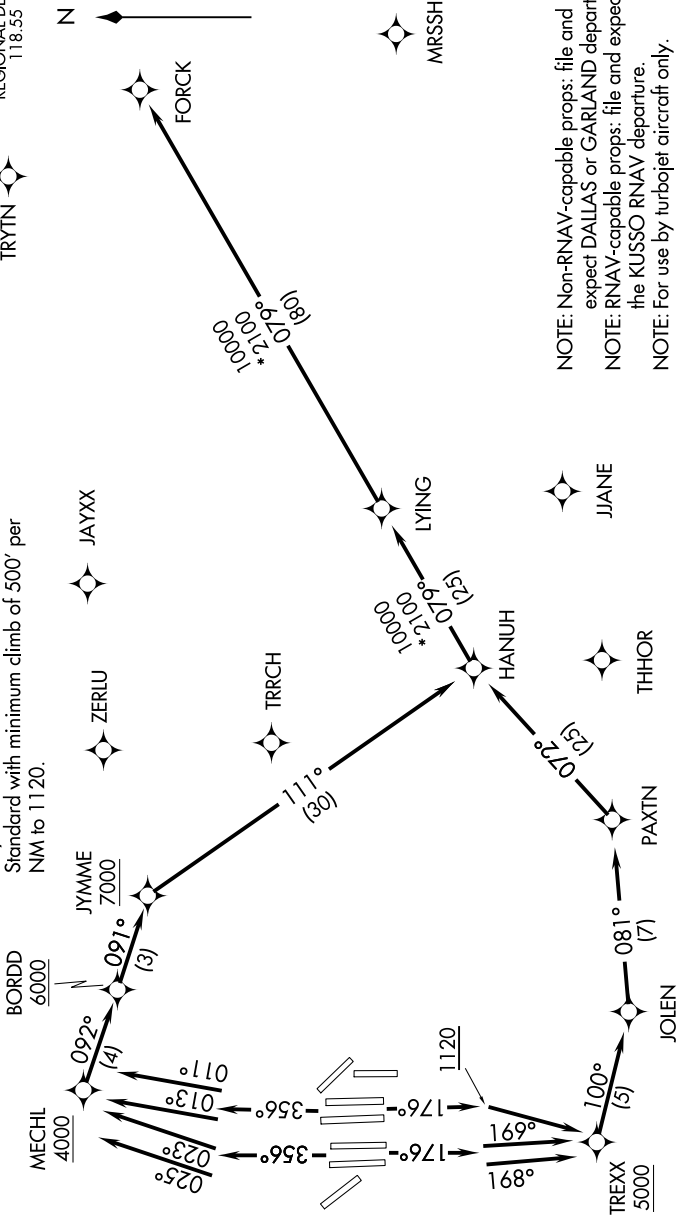
SC-2, 11 JUL 2024 to 08 AUG 2024

D-ATIS DEP 135.925  
 CLNC DEL 128.25  
 CPDLC  
 GND CON  
 121.65 121.8 (EAST)  
 121.85 (WEST)  
 DRW TOWER  
 126.55 127.5 (EAST)  
 124.15 134.9 (WEST)  
 REGIONAL DEP CON  
 118.55 290.33

RNAV 1 - DME/DME/IRU or GPS.  
 RADAR required.

TAKEOFF MINIMUMS  
 Rwy 31L/R: Standard.  
 Rwy 17C/R, 18L/R, 35L/C, 36L/R:  
 Standard with minimum climb of 500' per  
 NM to 1120.

TOP ALTITUDE:  
 RWYS 31L/R: 5000  
 RWYS 17C/R, 18L/R,  
 35L/C, 36L/R: 10000



(NARRATIVE ON FOLLOWING PAGE)

NOTE: Chart not to scale.

SC-2, 11 JUL 2024 to 08 AUG 2024