

COYOTE FOUR DEPARTURE

SC-2, 11 JUL 2024 to 08 AUG 2024

REGIONAL DEP CON
 135.975 379.9
 17L/C/R, 18L/R
 118.118.306.95
 D-ATIS DEP 135.925
 CLINC DEL 128.25
 CPDLC

GND CON
 121.65 121.8 (EAST)
 121.85 (WEST)
 DFW TOWER
 124.55 127.5 (EAST)
 124.15 134.9 (WEST)

RADAR and DME required:

(Prop aircraft only Rws 13L/R, 17L/C/R, 18L/R)
PANHANDLE
 116.6 PNH
 Chan 113

(Prop aircraft only Rws 31L/R, 35L/C/R, 36L/R)
WICHITA FALLS
 112.7 SPS
 Chan 74

CHILDRESS
 117.0 CDS
 Chan 117

TEXICO
 112.2 TXO
 Chan 59

TOP ALTITUDE:
 13L/R, 17L/C/R, 18L/R,
 31L/R, 35L/C/R, 36L/R: 2000

TEJICO
 112.2 TXO
 Chan 59

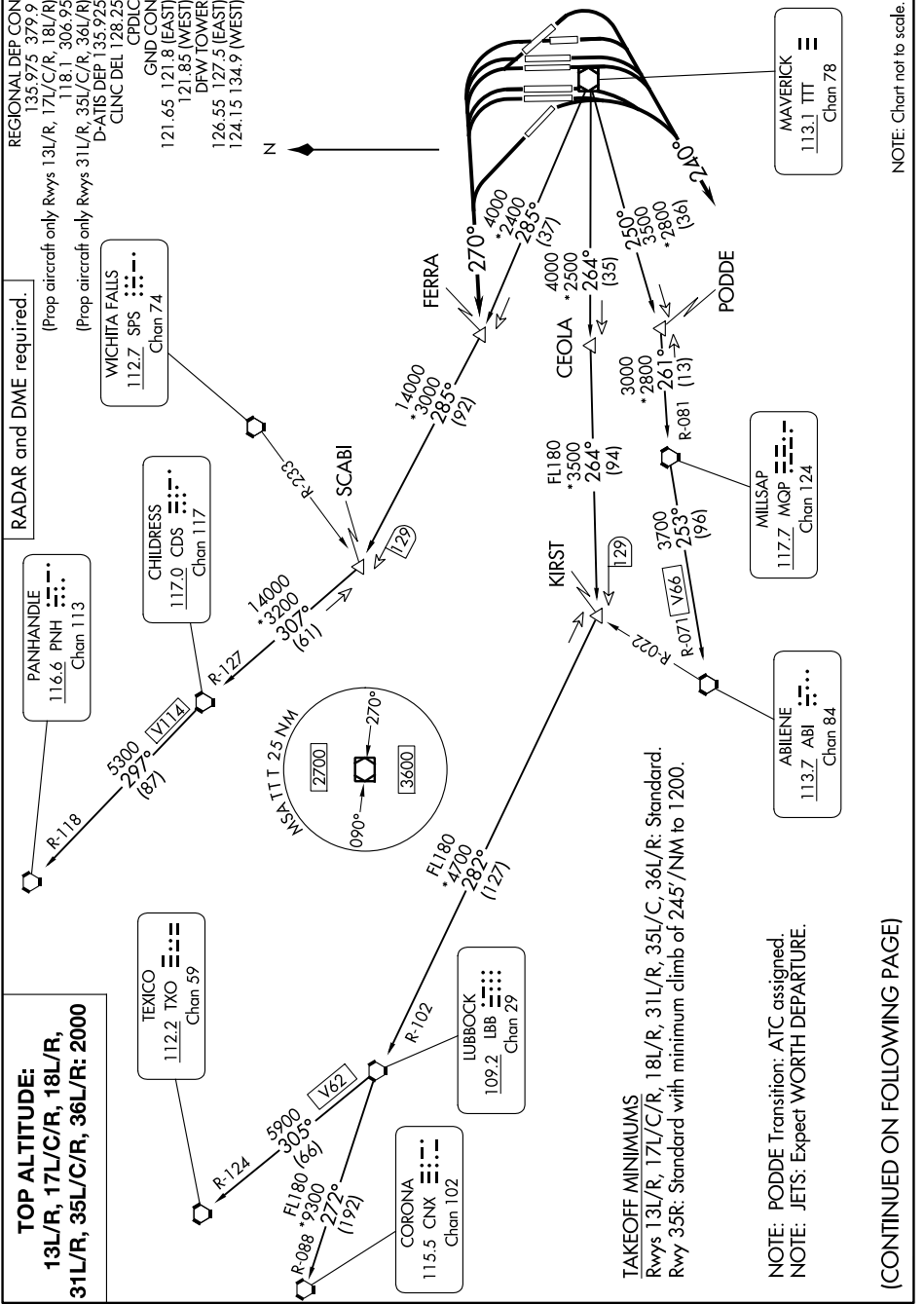
CORONA
 115.5 CNX
 Chan 102

LUBBOCK
 109.2 LBB
 Chan 29

ABILENE
 113.7 ABI
 Chan 84

MILLSAP
 117.7 MOP
 Chan 124

MAVERICK
 113.1 TTT
 Chan 78



TAKEOFF MINIMUMS
 Rws 13L/R, 17L/C/R, 18L/R, 31L/R, 35L/C, 36L/R: Standard.
 Rwy 35R: Standard with minimum climb of 245'/NM to 1200.

NOTE: PODDE Transition: ATC assigned.
 NOTE: JETS: Expect WORTH DEPARTURE.

(CONTINUED ON FOLLOWING PAGE)

NOTE: Chart not to scale.

SC-2, 11 JUL 2024 to 08 AUG 2024

COYOTE FOUR DEPARTURE