

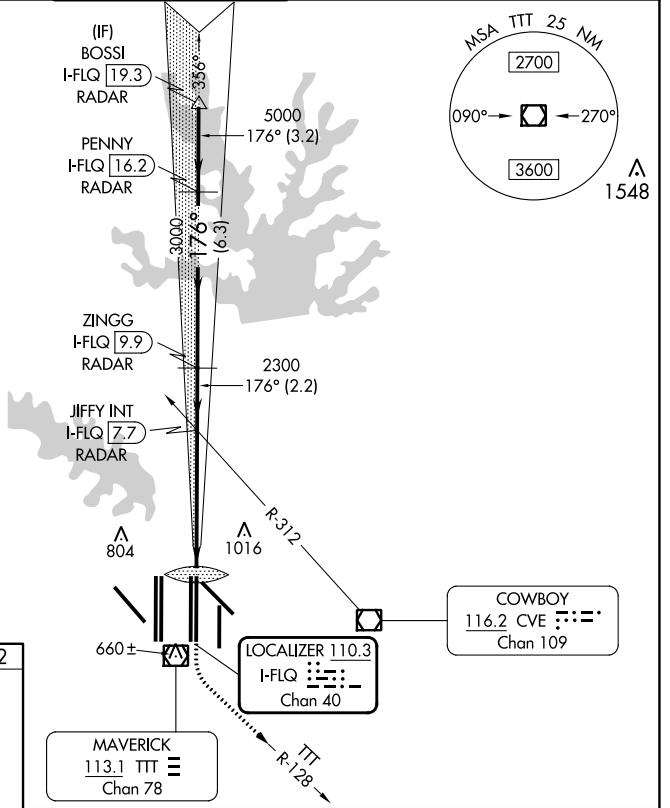
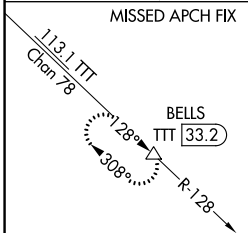
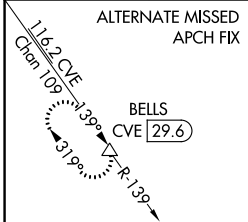
LOC/DME I-FLQ <b>110.3</b> Chan <b>40</b>	APP CRS <b>176°</b>	Rwy ldg <b>13400</b> TDZE <b>562</b> Apt Elev <b>607</b>
---	------------------------	--

# CONVERGING ILS RWY 17C

DALLAS-FORT WORTH INTL (DFW)

<b>▼</b> DME or RADAR required. Simultaneous approach authorized with Converging ILS Rwy 13R.	ALSF-2 	MISSED APPROACH: Climb to 3000 then climbing left turn to 3000 on TTT VOR/DME R-128 to BELLS/TTT 33.2 DME and hold.
--	------------	---

D-ATIS ARR <b>123.775</b> DEP <b>135.925</b>	REGIONAL APP CON <b>127.075</b>	DFW TOWER <b>126.55 127.5</b> EAST <b>124.15 134.9</b> WEST	GND CON <b>121.65 121.8</b> EAST <b>121.85</b> WEST	CLNC DEL <b>128.25</b>	CPDLC
--	------------------------------------	---	---	---------------------------	-------



**RADAR REQUIRED**

ELEV <b>607</b>	<b>D</b>	TDZE <b>562</b>
-----------------	----------	-----------------

