

BRDJE FIVE ARRIVAL (RNAV) Transition Routes

REGIONAL APP CON
125.025 263.025
D-ATIS ARR
123.775

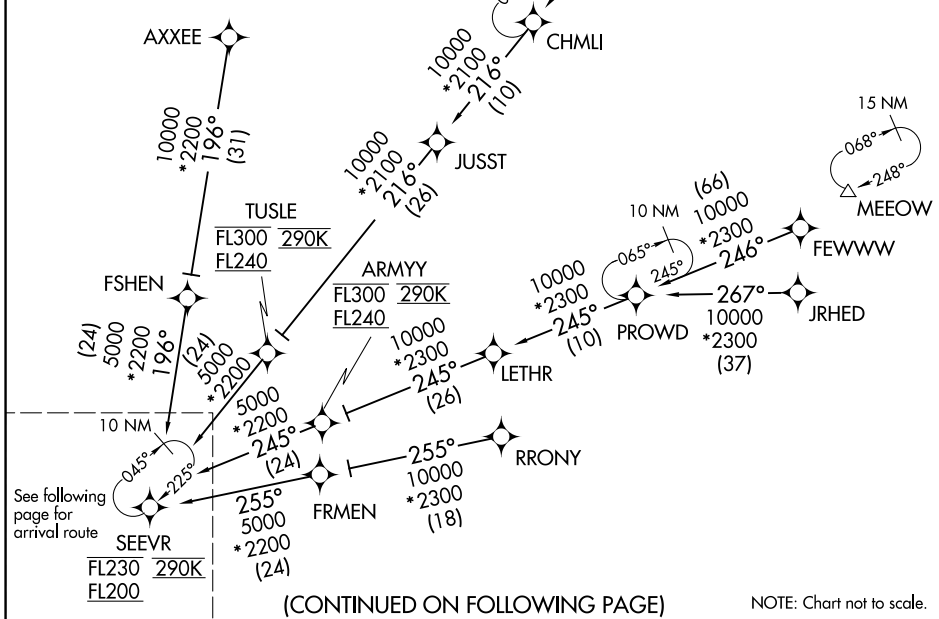
RNAV 1 - DME/DME/IRU or GPS.
RADAR required.

NOTE: Jet aircraft only.
NOTE: For use when DFW is operating in a north flow.
When DFW is in south flow, expect and file the
SEEVR (RNAV) STAR.
NOTE: JRHED Transition: Do not file - to be assigned by ATC.
NOTE: PROWD Transition: Do not file - to be assigned by ATC.
NOTE: CHMLI Transition: Do not file - to be assigned by ATC.
NOTE: AXXEE and RRONY Transitions for aircraft filing
FL230 and below.

- AXXEE TRANSITION (AXXEE.BRDJE5)
- CHMLI TRANSITION (CHMLI.BRDJE5)
- FEWWW TRANSITION (FEWWW.BRDJE5)
- HITUG TRANSITION (HITUG.BRDJE5)
- JRHED TRANSITION (JRHED.BRDJE5)
- PROWD TRANSITION (PROWD.BRDJE5)
- RRNET TRANSITION (RRNET.BRDJE5)
- RRONY TRANSITION (RRONY.BRDJE5)

SC-2, 11 JUL 2024 to 08 AUG 2024

SC-2, 11 JUL 2024 to 08 AUG 2024



BRDJE FIVE ARRIVAL (RNAV) Transition Routes