

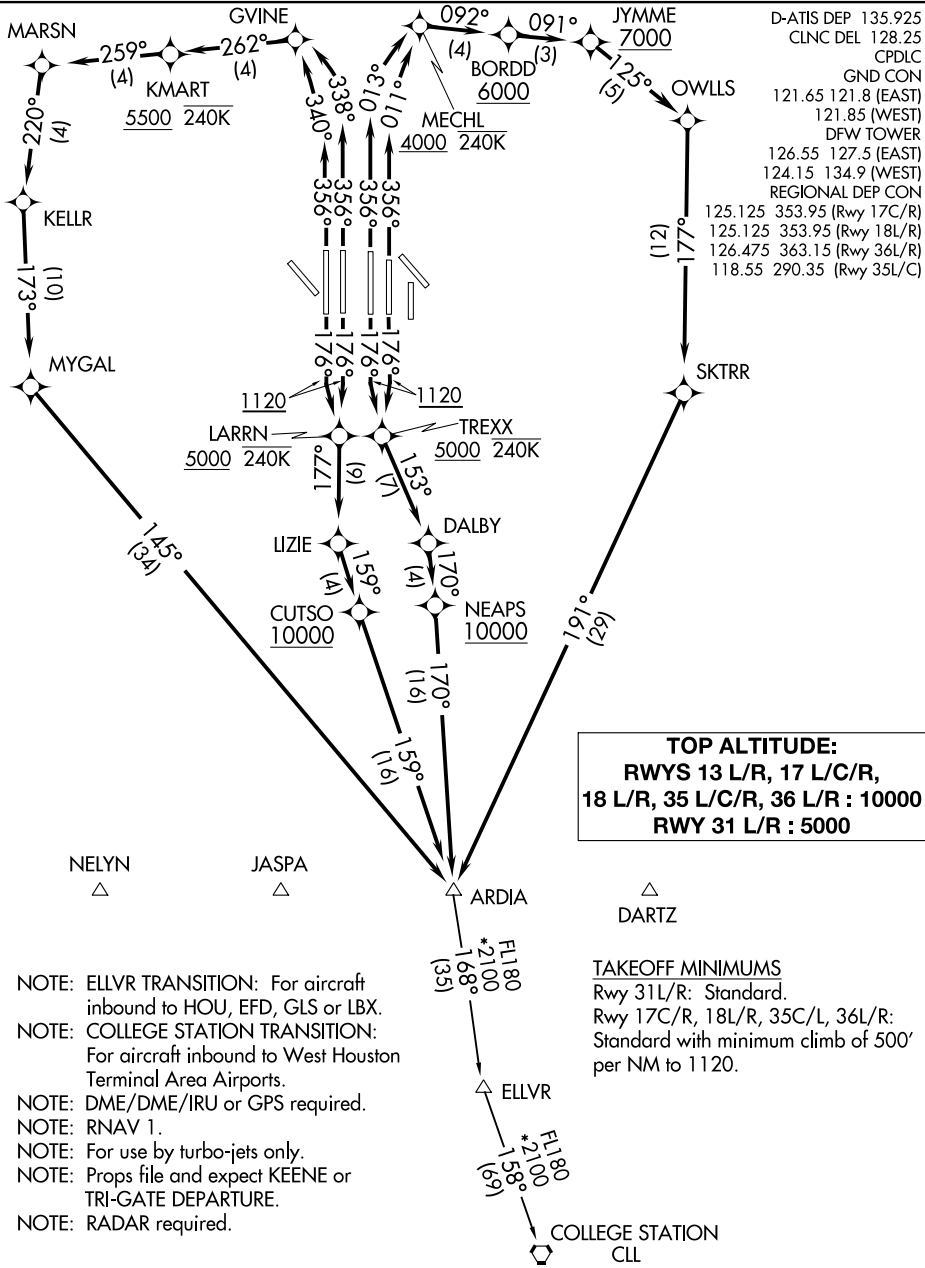
(ARDIA7.ARDIA) 23334

AL-6039 (FAA)

DALLAS-FORT WORTH INTL (DFW)

ARDIA SEVEN DEPARTURE (RNAV)

DALLAS-FORT WORTH, TEXAS



D-ATIS DEP 135.925
 CLNC DEL 128.25
 CPDLC
 GND CON
 121.65 121.8 (EAST)
 121.85 (WEST)
 DFW TOWER
 126.55 127.5 (EAST)
 124.15 134.9 (WEST)
 REGIONAL DEP CON
 125.125 353.95 (Rwy 17C/R)
 125.125 353.95 (Rwy 18L/R)
 126.475 363.15 (Rwy 36L/R)
 118.55 290.35 (Rwy 35L/C)

- NOTE: ELLVR TRANSITION: For aircraft inbound to HOU, EFD, GLS or LBX.
- NOTE: COLLEGE STATION TRANSITION: For aircraft inbound to West Houston Terminal Area Airports.
- NOTE: DME/DME/IRU or GPS required.
- NOTE: RNAV 1.
- NOTE: For use by turbo-jets only.
- NOTE: Props file and expect KEENE or TRI-GATE DEPARTURE.
- NOTE: RADAR required.

NOTE: Chart not to scale

(NARRATIVE ON FOLLOWING PAGE)

ARDIA SEVEN DEPARTURE (RNAV)

(ARDIA7.ARDIA) 10OCT19

DALLAS-FORT WORTH, TEXAS

DALLAS-FORT WORTH INTL (DFW)

SC-2, 11 JUL 2024 to 08 AUG 2024

SC-2, 11 JUL 2024 to 08 AUG 2024