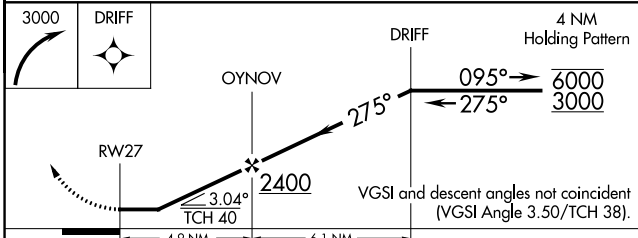
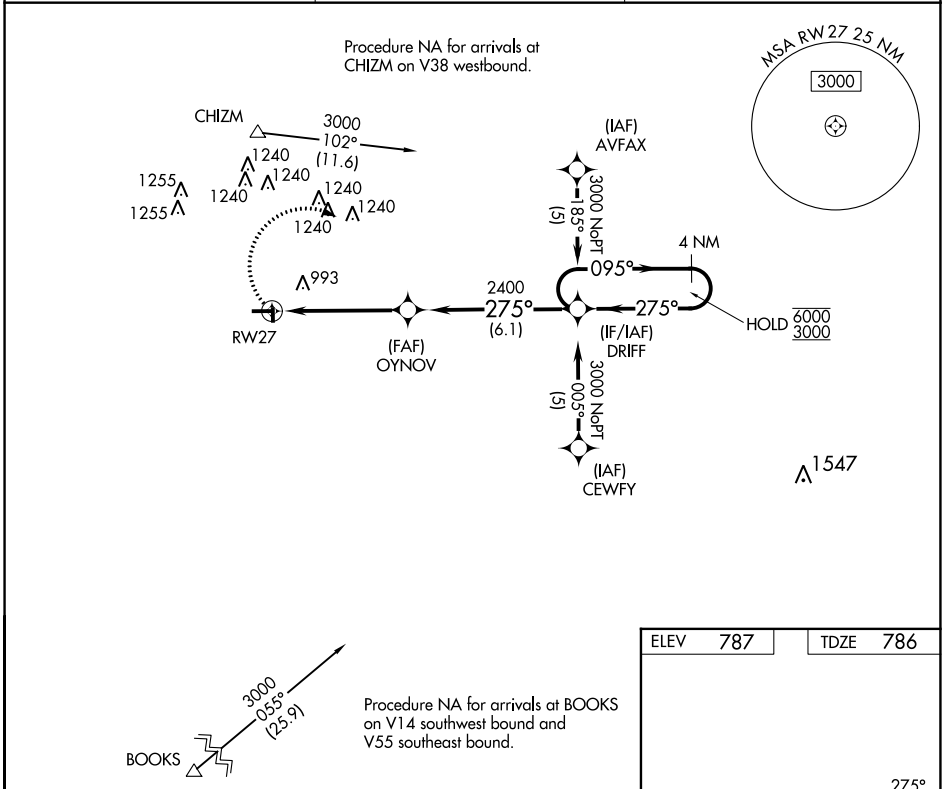


APP CRS	Rwy Idg	<b>4000</b>
<b>275°</b>	TDZE	<b>786</b>
	Apt Elev	<b>787</b>

# RNAV (GPS) RWY 27

VAN WERT COUNTY (VNW)

RNP APCH - GPS.		MISSED APPROACH: Climbing right turn to 3000 direct DRIF and hold.
<p>▼ Circling NA to Rwys 18 and 36. Procedure NA at night. Rwy 27 helicopter visibility reduction below 1 SM NA.</p> <p>▲</p>	AWOS-3 <b>125.175</b>	FORT WAYNE APP CON <b>127.2 284.6</b>
	UNICOM <b>123.0 (CTAF) 0</b>	



ELEV	787	TDZE	786
------	-----	------	-----

81 27 36

4000 X 75

01 2558 X 95

MIRL Rwy 9-27 0

REIL Rws 9 and 27 0

CATEGORY	A	B	C	D
LNVA MDA	1280-1	494 (500-1)	1280-1 <sup>3</sup> / <sub>8</sub> 494 (500-1 <sup>3</sup> / <sub>8</sub> )	1280-1 <sup>1</sup> / <sub>2</sub> 494 (500-1 <sup>1</sup> / <sub>2</sub> )
<b>C</b> CIRCLING	1340-1	553 (600-1)	1340-1 <sup>1</sup> / <sub>2</sub> 553 (600-1 <sup>1</sup> / <sub>2</sub> )	1600-2 <sup>3</sup> / <sub>4</sub> 813 (900-2 <sup>3</sup> / <sub>4</sub> )

EC-2, 31 OCT 2024 to 28 NOV 2024

EC-2, 31 OCT 2024 to 28 NOV 2024