

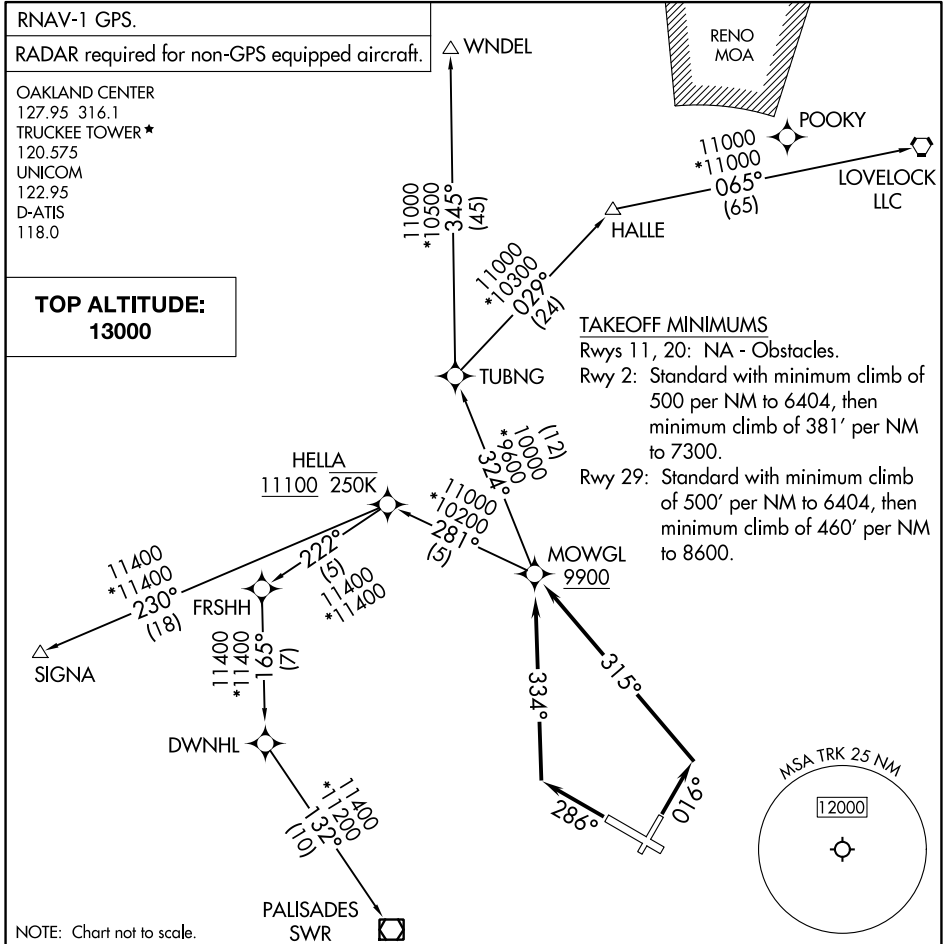
# MOWGL TWO DEPARTURE (RNAV)

AL-6021 (FAA)

TRUCKEE-TAHOE (TRK)  
TRUCKEE, CALIFORNIA

RNAV-1 GPS.
RADAR required for non-GPS equipped aircraft.
OAKLAND CENTER 127.95 316.1
TRUCKEE TOWER * 120.575
UNICOM 122.95
D-ATIS 118.0

<b>TOP ALTITUDE: 13000</b>
--------------------------------



NOTE: Chart not to scale.

**DEPARTURE ROUTE DESCRIPTION**

TAKEOFF RUNWAY 2: Climb on heading 016° to intercept course 315° to cross MOWGL at or above 9900, thence. . . .

TAKEOFF RUNWAY 29: Climb on heading 286° to intercept course 334° to cross MOWGL at or above 9900, thence. . . .

. . . .(transition) maintain 13000 expect filed altitude 10 minutes after departure.

HALLE TRANSITION (MOWGL2.HALLE)  
LOVELOCK TRANSITION (MOWGL2.LLC)  
PALISADES TRANSITION (MOWGL2.SWR)  
SIGNA TRANSITION (MOWGL2.SIGNA)  
WNDL TRANSITION (MOWGL2.WNDL)

SW-2, 05 SEP 2024 to 03 OCT 2024

SW-2, 05 SEP 2024 to 03 OCT 2024