

NAPLES, FLORIDA


AL-6020 (FAA)

25107

WAAS CH 73015 W05A	APP CRS 047°	Rwy ldg TDZE Apt Elev	5000 8 8
--	------------------------	-----------------------------	-------------------------------------

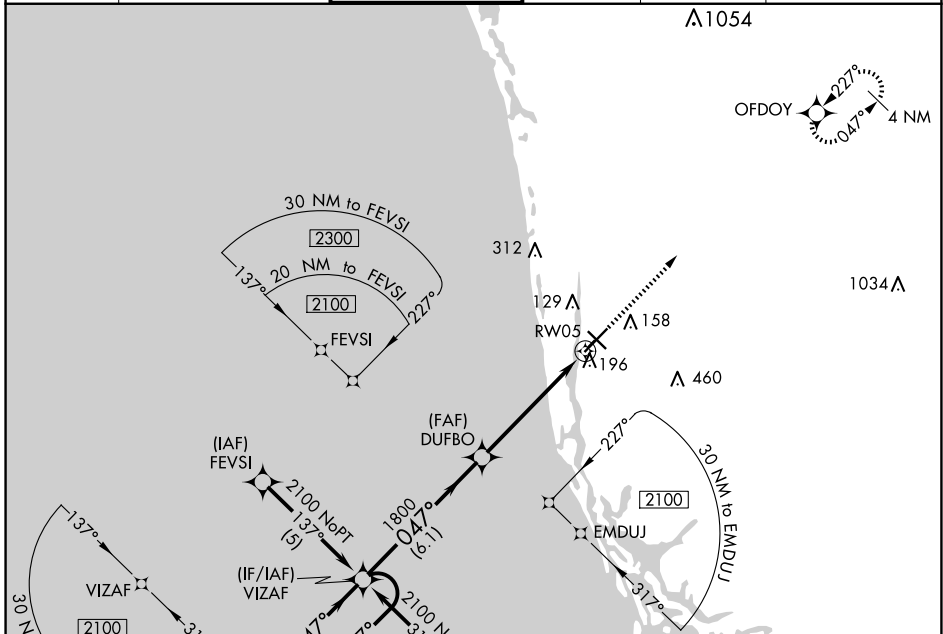
RNAV (GPS) RWY 5

NAPLES MUNI (APF)

RNP APCH.
 For uncompensated Baro-VNAV systems, LNAV/VNAV NA below 5°C or above 54°C.

MISSED APPROACH: Climb to 2100 direct OFDOY and hold.

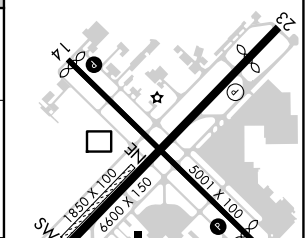
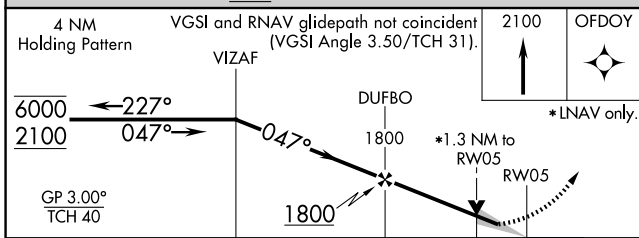
ATIS 134.225	FORT MYERS APP CON* 124.125 371.85	NAPLES TOWER* 128.5 (CTAF) 0	GND CON 121.6	CLNC DEL 118.0	CLNC DEL 124.125 (When twr closed)
------------------------	--	--	-------------------------	--------------------------	---



SE-3, 15 MAY 2025 to 12 JUN 2025

SE-3, 15 MAY 2025 to 12 JUN 2025

ELEV 8	D TDZE 8
--------	-----------------



CATEGORY	A	B	C	D
LPV DA		295- ⁷ / ₈	287 (300- ⁷ / ₈)	
LNAV/VNAV DA		446- ¹ / ₄	438 (500- ¹ / ₄)	
LNAV MDA	540-1	532 (600-1)	540- ¹ / ₂	532 (600- ¹ / ₂)
CIRCLING	580-1	572 (600-1)	680-2 672 (700-2)	820- ² / ₄ 812 (900- ² / ₄)

REIL Rwy 5, 14, 23 and 32
 MRL Rwy 5-23 and 14-32

NAPLES, FLORIDA
 Amdt 2C 17JUN21

26°09'N-81°47'W

RNAV (GPS) RWY 5