

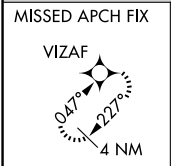
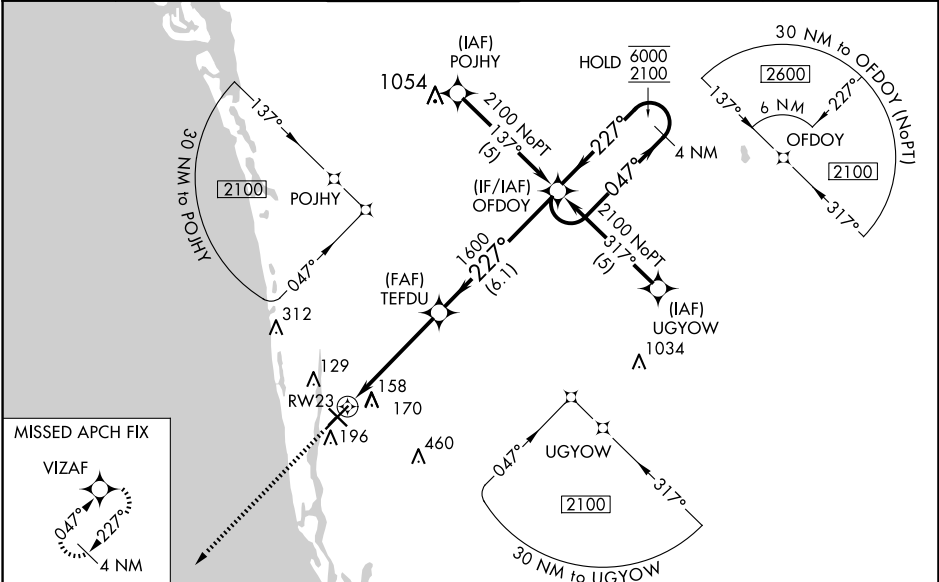
WAAS CH <b>69314</b> <b>W23A</b>	APP CRS <b>227°</b>	Rwy ldg TDZE Apt Elev	<b>5000</b> <b>8</b> <b>8</b>
--	------------------------	-----------------------------	-------------------------------------

# RNAV (GPS) RWY 23

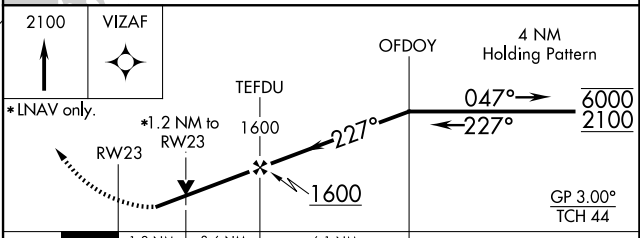
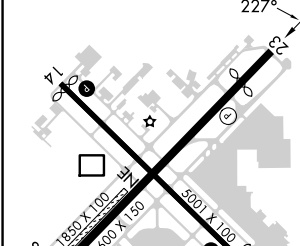
NAPLES MUNI (APF)

RNP APCH.	<p><b>▽</b> Rwy 23 helicopter visibility reduction below <math>\frac{3}{4}</math> SM NA. For uncompensated Baro-VNAV systems, LNAV/VNAV NA below 5°C or above 54°C.</p>	<p>MISSED APPROACH: Climb to 2100 direct VIZAF and hold.</p>

ATIS <b>134.225</b>	FORT MYERS APP CON* <b>124.125 371.85</b>	NAPLES TOWER* <b>128.5 (CTAF) 0</b>	GND CON <b>121.6</b>	CLNC DEL <b>118.0</b>	CLNC DEL <b>124.125</b> (When twr closed)
------------------------	--	--	-------------------------	--------------------------	---



ELEV 8	<b>D</b>	TDZE 8
--------	----------	--------



CATEGORY	A	B	C	D
LPV DA		313- $\frac{7}{8}$	305 (400- $\frac{7}{8}$ )	
LNAV/VNAV DA		461-1 $\frac{3}{8}$	453 (500-1 $\frac{3}{8}$ )	
LNAV MDA	440-1	432 (500-1)	440-1 $\frac{1}{4}$	432 (500-1 $\frac{1}{4}$ )
CIRCLING	580-1	572 (600-1)	680-2 672 (700-2)	820-2 $\frac{3}{4}$ 812 (900-2 $\frac{3}{4}$ )

MIRL Rwy 5-23 and 14-32 **0**  
 REL Rwy 5, 14, 23 and 32 **0**

SE-3, 15 MAY 2025 to 12 JUN 2025

SE-3, 15 MAY 2025 to 12 JUN 2025