

# NAPLES SIX DEPARTURE

RADAR required.

**TOP ALTITUDE:  
2000**

FORT MYERS DEP CON\*  
124.125 371.85  
CLNC DEL  
118.0  
CLNC DEL (When twr closed)  
124.125  
NAPLES TOWER\*  
128.5 (CTAF)

ST PETERSBURG  
116.4 PIE :--  
Chan 111

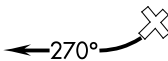
ORLANDO  
112.2 ORL :--  
Chan 59

LAKELAND  
116.0 LAL :--  
Chan 107

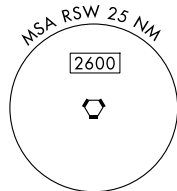
SARASOTA  
117.0 SRQ :--  
Chan 117

LEE COUNTY  
114.15 RSW :--  
Chan 88(Y)

FT. LAUDERDALE  
114.4 FLL :--  
Chan 91



KEY WEST  
113.5 EYW :--  
Chan 82



**TAKEOFF MINIMUMS**  
Rwys 5, 14, 32: NA-ATC.  
Rwy 23: 300-1.

**NOISE ABATEMENT NOTE:**

Jet aircraft departure procedures and headings are predicated on avoiding noise sensitive areas. Flight crew awareness and compliance is important in minimizing noise impacts on surrounding communities.

NOTE: Chart not to scale.



## DEPARTURE ROUTE DESCRIPTION

**TAKEOFF RUNWAY 23:** Turn right heading 270°. Climb and maintain 2000. Expect RADAR vectors to join assigned route. Expect clearance to filed altitude 10 minutes after departure.