

(CSHEL7.CSHEL) 24305

AL-6020 (FAA)

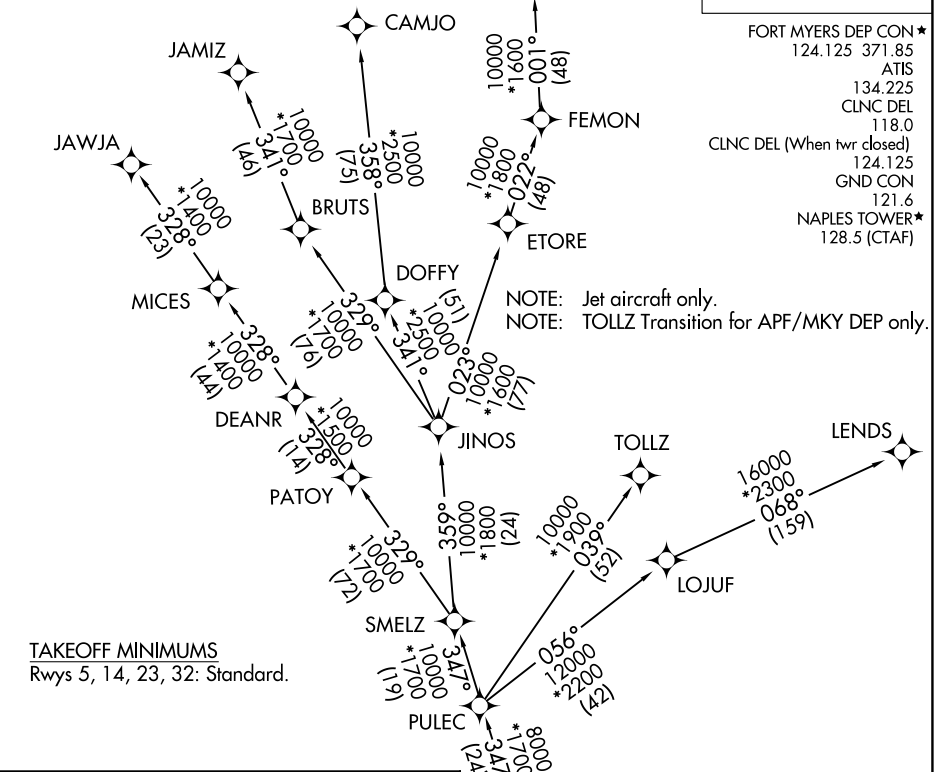
NAPLES MUNI (APF)
NAPLES, FLORIDA

CSHEL SEVEN DEPARTURE (RNAV)

RNAV 1 - DME/DME/IRU or GPS.
RADAR required for non-GPS equipped aircraft.

**TOP ALTITUDE:
2000**

FORT MYERS DEP CON*
124.125 371.85
ATIS
134.225
CLNC DEL
118.0
CLNC DEL (When twr closed)
124.125
GND CON
121.6
NAPLES TOWER*
128.5 (CTAF)



TAKEOFF MINIMUMS
Rwys 5, 14, 23, 32: Standard.

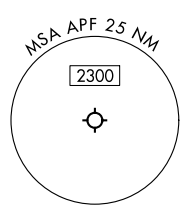
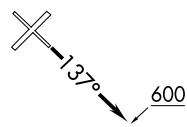
DEPARTURE ROUTE DESCRIPTION

TAKEOFF RUNWAYS 5, 23, 32: Climb on assigned heading for RADAR vectors to CSHEL, thence...

TAKEOFF RUNWAY 14: Climb on heading 137° to 600, for RADAR vectors to CSHEL, thence...

... on assigned transition. Maintain 2000. Expect clearance to filed altitude within 10 minutes after departure.

CAMJO TRANSITION (CSHEL7.CAMJO)
JAMIZ TRANSITION (CSHEL7.JAMIZ)
JAWJA TRANSITION (CSHEL7.JAWJA)
LEND5 TRANSITION (CSHEL7.LEND5)
TOLLZ TRANSITION (CSHEL7.TOLLZ)
VIYAP TRANSITION (CSHEL7.VIYAP)



NOTE: Chart not to scale.

CSHEL SEVEN DEPARTURE (RNAV)
(CSHEL7.CSHEL) 31OCT24

NAPLES, FLORIDA
NAPLES MUNI (APF)

SE-3, 31 OCT 2024 to 28 NOV 2024

SE-3, 31 OCT 2024 to 28 NOV 2024