

APP CRS 323°	Rwy Idg 3641
	TDZE 1286
	Apt Elev 1288

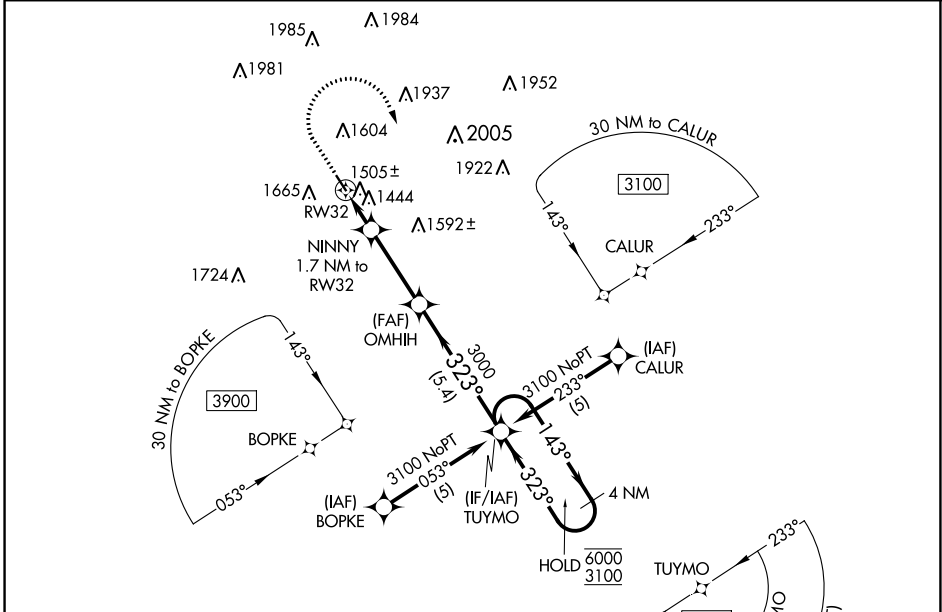
RNAV (GPS) RWY 32

AUDUBON COUNTY (ADU)

RNP APCH - GPS.
 ▼ When local altimeter setting not received, procedure NA.
 Rwy 32 helicopter visibility reduction below 3/4 SM NA.
 Circling Rwy 14 NA at night.

MISSED APPROACH: Climb to 2500 then climbing right turn to 3100 direct TUYMO and hold.

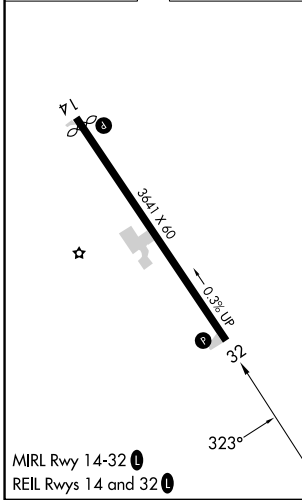
AWOS-3 118.075	MINNEAPOLIS CENTER 119.6 290.4	UNICOM 122.8 (CTAF) ①
--------------------------	--	---------------------------------



NC-3, 03 OCT 2024 to 31 OCT 2024

NC-3, 03 OCT 2024 to 31 OCT 2024

ELEV 1288	TDZE 1286
-----------	-----------



2500	3100	TUYMO	TUYMO
↑	↷	✧	✧
NINNY 1.7 NM to RW32		OMHIH	4 NM Holding Pattern
RW32		3000	6000 3100
1.7 NM		3.2 NM	5.4 NM
CATEGORY	A	B	C D
LNAV MDA	1760-1	474 (500-1)	NA
CIRCLING	1980-1	692 (700-1)	NA