

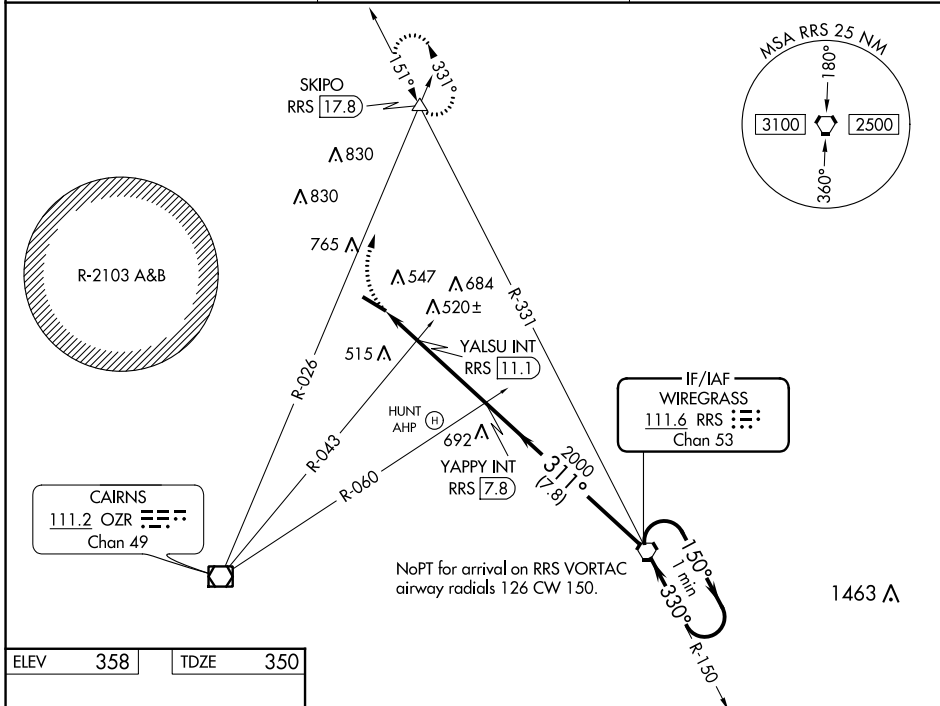
VORTAC RRS <b>111.6</b> Chan <b>53</b>	APP CRS <b>311°</b>	Rwy Idg <b>5152</b> TDZE <b>350</b> Apt Elev <b>358</b>
--	------------------------	---

**VOR RWY 31**  
OZARK/BLACKWELL FLD (71J)

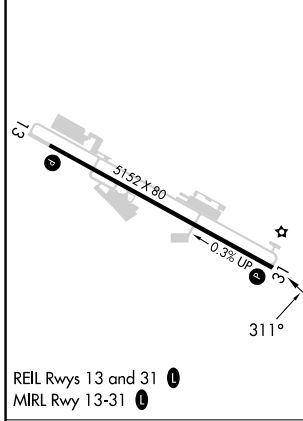
Use Dothan altimeter setting; when not received, use Cairns AAF (Fort Novosel) altimeter setting. Procedure NA at night. Rwy 31 helicopter visibility reduction below 1 SM NA.

MISSED APPROACH: Climbing right turn to 2000 on OZR VOR/DME R-026 to SKIPO INT/RRS 17.8 DME and hold.

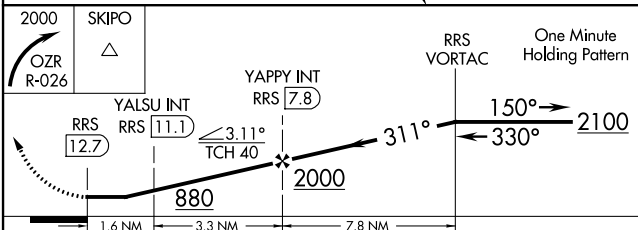
DHN ASOS <b>135.725</b>	CAIRNS APP CON * <b>125.4 327.125</b>	UNICOM <b>122.7 (CTAF)</b>
----------------------------	--	-------------------------------



ELEV	358	TDZE	350
------	-----	------	-----



REIL Rws 13 and 31	1				
MIRL Rwy 13-31	1				
FAF to MAP 4.9 NM					
Knots	60	90	120	150	180
Min:Sec	4:54	3:16	2:27	1:58	1:38



CATEGORY	A	B	C	D
S-31	880-1	530 (600-1)	880-1½ 530 (600-1½)	NA
CIRCLING	900-1 542 (600-1)	1100-1¾ 742 (800-1¾)	1100-2¼ 742 (800-2¼)	NA
YALSU FIX MINIMUMS (DUAL VOR RECEIVERS OR DME REQUIRED)				
S-31	820-1	470 (500-1)	820-1¾ 470 (500-1¾)	NA
CIRCLING	900-1 542 (600-1)	1100-1¾ 742 (800-1¾)	1100-2¼ 742 (800-2¼)	NA

SE-4, 03 OCT 2024 to 31 OCT 2024

SE-4, 03 OCT 2024 to 31 OCT 2024