

WAAS CH <b>50232</b> <b>W13A</b>	APP CRS <b>125°</b>	Rwy Idg <b>5152</b> TDZE <b>358</b> Apt Elev <b>358</b>
--	------------------------	---

# RNAV (GPS) RWY 13

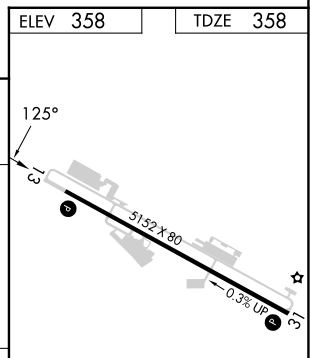
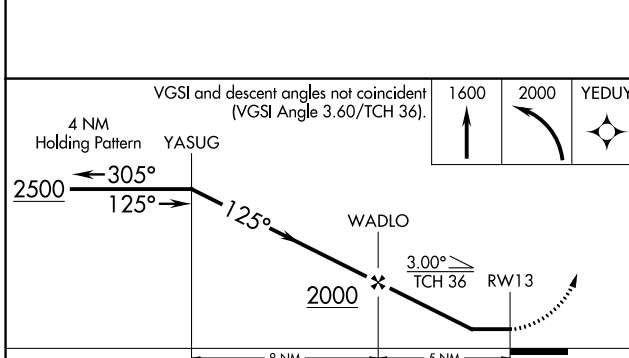
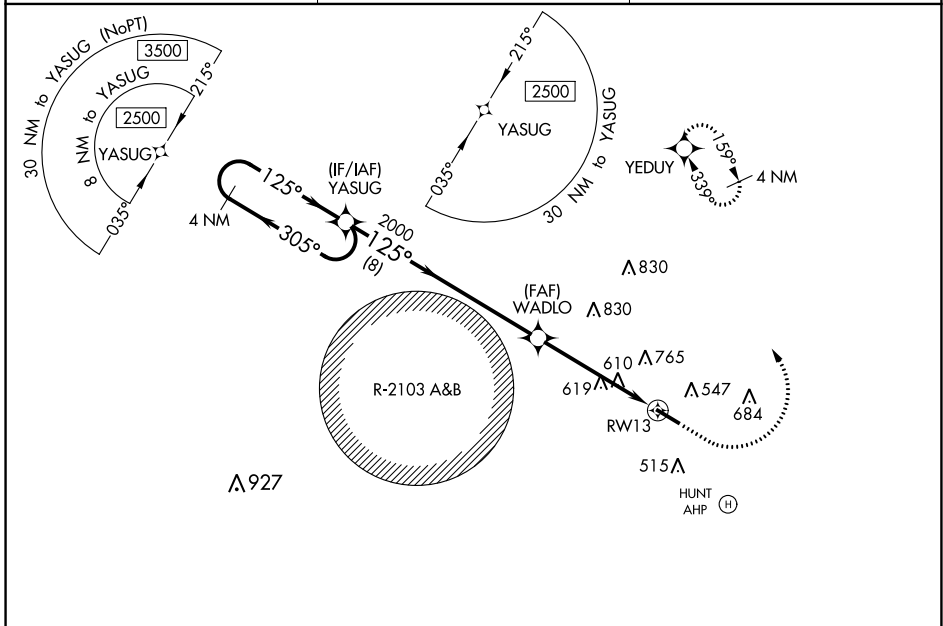
OZARK/BLACKWELL FLD (71J)

RNP APCH.

**▽** Use Dothan altimeter setting; when not received, use Cairns  
**△NA** AAF (Fort Novosel) altimeter setting. Procedure NA at night.  
Rwy 13 helicopter visibility reduction below 1 SM NA.

MISSED APPROACH: Climb to 1600 then climbing left turn to 2000 direct YEDUY and hold.

DHN ASOS <b>135.725</b>	CAIRNS APP CON ★ <b>125.4 327.125</b>	UNICOM <b>122.7 (CTAF) 0</b>
----------------------------	--	---------------------------------



CATEGORY	A		B		C		D	
	LP	MDA	LP	MDA	LP	MDA	LP	MDA
LP	900-1	542 (600-1)	900-1 5/8	542 (600-1 5/8)	900-1 3/4	602 (700-1 3/4)	900-1 3/4	602 (700-1 3/4)
LNNAV	960-1	602 (700-1)	960-1 3/4	602 (700-1 3/4)	960-1 3/4	602 (700-1 3/4)	960-1 3/4	602 (700-1 3/4)
CIRCLING	960-1	602 (700-1)	1100-1 3/4	742 (800-1 3/4)	1100-2 1/4	742 (800-2 1/4)	1100-2 1/4	742 (800-2 1/4)

REIL Rws 13 and 31 0  
MIRL Rwy 13-31 0

SE-4, 03 OCT 2024 to 31 OCT 2024

SE-4, 03 OCT 2024 to 31 OCT 2024