

WAAS CH 50405 W25A	APP CRS 253°	Rwy Idg TDZE Apt Elev	5000 891 891
--	------------------------	-----------------------------	---

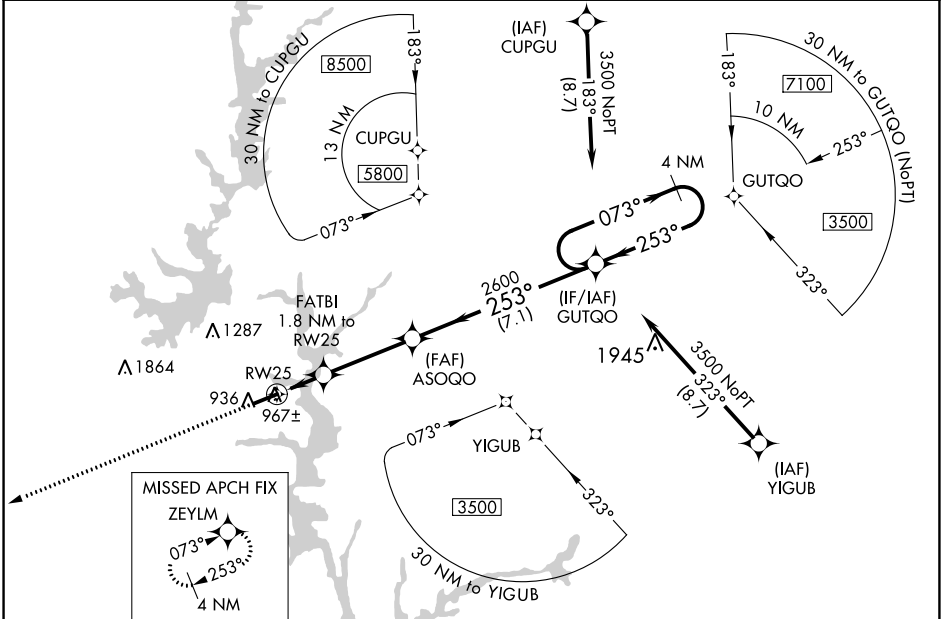
RNAV (GPS) RWY 25

OCONEE COUNTY RGNL (CEU)

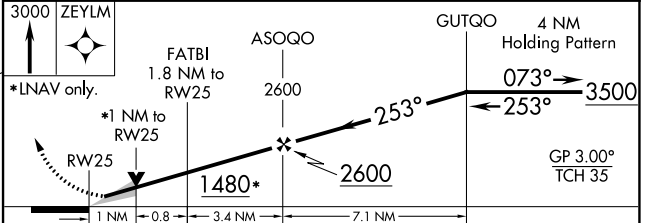
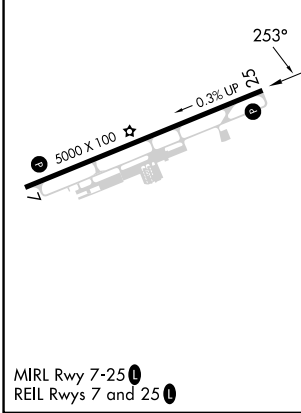
⚠ For uncompensated Baro-VNAV systems, LNAV/VNAV NA below -6°C (22°F) or above 54°C (130°F). DME/DME RNP-0.3 NA. When local altimeter setting not received, use Anderson altimeter setting and increase all DA 47 feet and all MDA 60 feet; increase LPV all Cats, and LNAV Cat C visibility 1/8 mile; increase LNAV/VNAV all Cats visibility 1/4 mile. Baro-VNAV and VDP NA when using Anderson altimeter setting.

MISSED APPROACH: Climb to 3000 direct ZEYLM and hold.

ASOS 119.275	GREER APP CON* 118.8 270.275	UNICOM 122.7 (CTAF) 📞
------------------------	--	--



ELEV 891	TDZE 891
----------	----------



	A	B	C	D
LPV DA	1091-3/4	200 (200-3/4)		NA
LNAV/VNAV DA	1141-7/8	250 (300-7/8)		NA
LNAV MDA	1220-1	329 (400-1)		NA
C CIRCLING	1300-1 409 (500-1)	1360-1 469 (500-1)	1640-2 1/4 749 (800-2 1/4)	NA

SE-2, 31 OCT 2024 to 28 NOV 2024

SE-2, 31 OCT 2024 to 28 NOV 2024