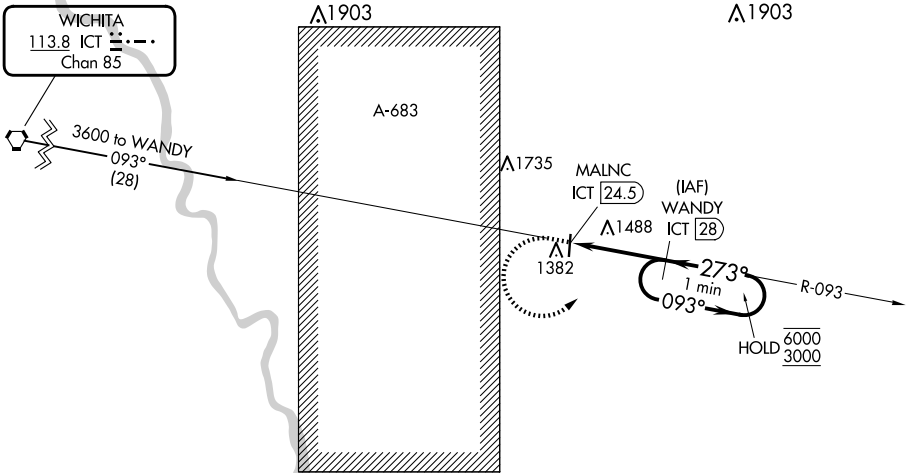


VORTAC ICT <b>113.8</b> Chan <b>85</b>	APP CRS <b>273°</b>	Rwy Idg TDZE Apt Elev <b>1326</b>	<b>N/A</b> <b>N/A</b>
--	------------------------	--	--------------------------

**VOR-A**  
AUGUSTA MUNI (3AU)

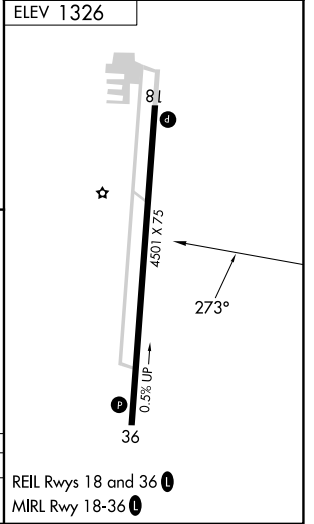
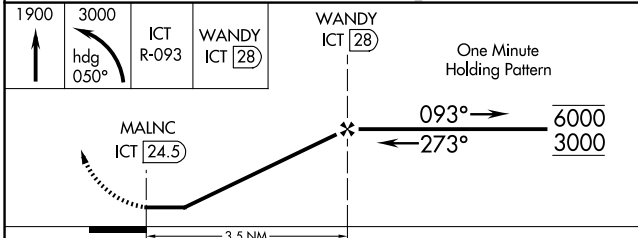
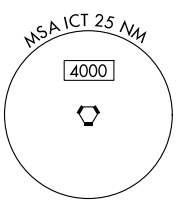
DME required.		MISSED APPROACH: Climb to 1900 then climbing left turn to 3000 on heading 050° and on ICT VORTAC R-093 to WANDY/28 DME and hold, continue climb-in-hold to 3000.	
<p><b>▼</b> When local altimeter setting not received, use AAO altimeter setting and increase all MDAs 40 feet.</p>			
AWOS-3P <b>124.175</b>	WICHITA APP CON <b>134.8 269.1</b>	CLNC DEL <b>125.0</b>	UNICOM <b>122.8 (CTAF)</b>

Procedure NA for arrival on ICT VORTAC airway radials 033 CW 153.



NC-2, 23 JAN 2025 to 20 FEB 2025

NC-2, 23 JAN 2025 to 20 FEB 2025



CATEGORY	A	B	C	D
<b>C</b> CIRCLING	1800-1 474 (500-1)	1820-1 494 (500-1)	1820-1½ 494 (500-1½)	NA