

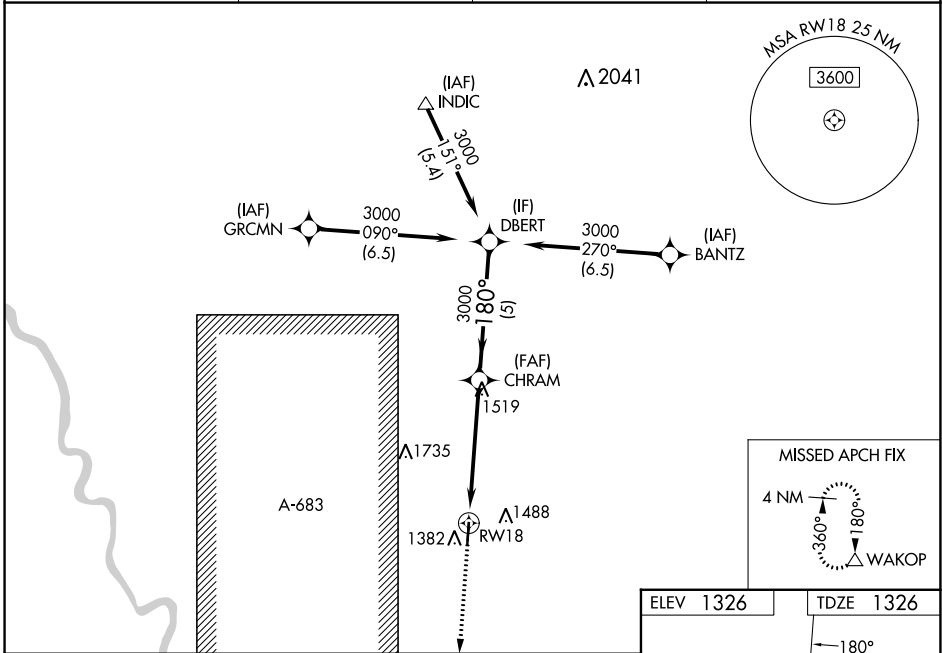
WAAS CH <b>70348</b> <b>W18A</b>	APP CRS <b>180°</b>	Rwy Idg TDZE <b>1326</b> Apt Elev <b>1326</b>	<b>4501</b>
--	------------------------	---	-------------

# RNAV (GPS) RWY 18

AUGUSTA MUNI (3AU)

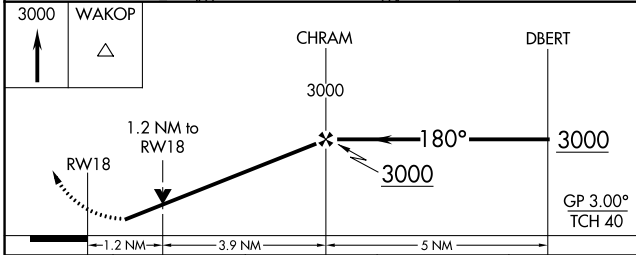
RNP APCH - GPS.	MISSED APPROACH: Climb to 3000 direct WAKOP and hold.
Rwy 18 helicopter visibility reduction below $\frac{3}{4}$ SM NA. For uncompensated Baro-VNAV systems, LNAV/VNAV NA below -17°C or above 54°C. Baro-VNAV and VDP NA when using AAO altimeter setting. When local altimeter setting not received, use AAO altimeter setting and increase LPV DA to 1624 feet; increase LNAV/VNAV DA to 1742 feet; increase all MDAs 40 feet and LNAV visibility Cat C $\frac{1}{8}$ SM.	

AWOS-3P <b>124.175</b>	WICHITA APP CON <b>134.8 269.1</b>	CLNC DEL <b>125.0</b>	UNICOM <b>122.8 (CTAF)</b>
---------------------------	---------------------------------------	--------------------------	-------------------------------



NC-2, 31 OCT 2024 to 28 NOV 2024

NC-2, 31 OCT 2024 to 28 NOV 2024



CATEGORY	A	B	C	D
LPV DA	1591-1 265 (300-1)			NA
LNAV/VNAV DA	1709-1 $\frac{1}{8}$ 383 (400-1 $\frac{1}{8}$ )			NA
LNAV MDA	1760-1 434 (500-1)	1760-1 $\frac{1}{4}$ 434 (500-1 $\frac{1}{4}$ )		NA
CIRCLING	1800-1 474 (500-1)	1820-1 494 (500-1)	1820-1 $\frac{1}{2}$ 494 (500-1 $\frac{1}{2}$ )	NA

