

VOR/DME IDA <b>113.85</b> Chan <b>85</b> (Y)	APP CRS <b>016°</b>	Rwy Idg TDZE Apt Elev	<b>3900</b> <b>4862</b> <b>4862</b>
--	------------------------	-----------------------------	---

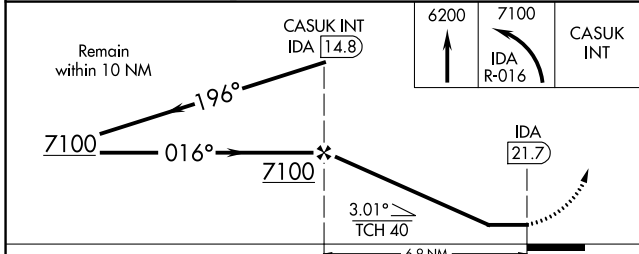
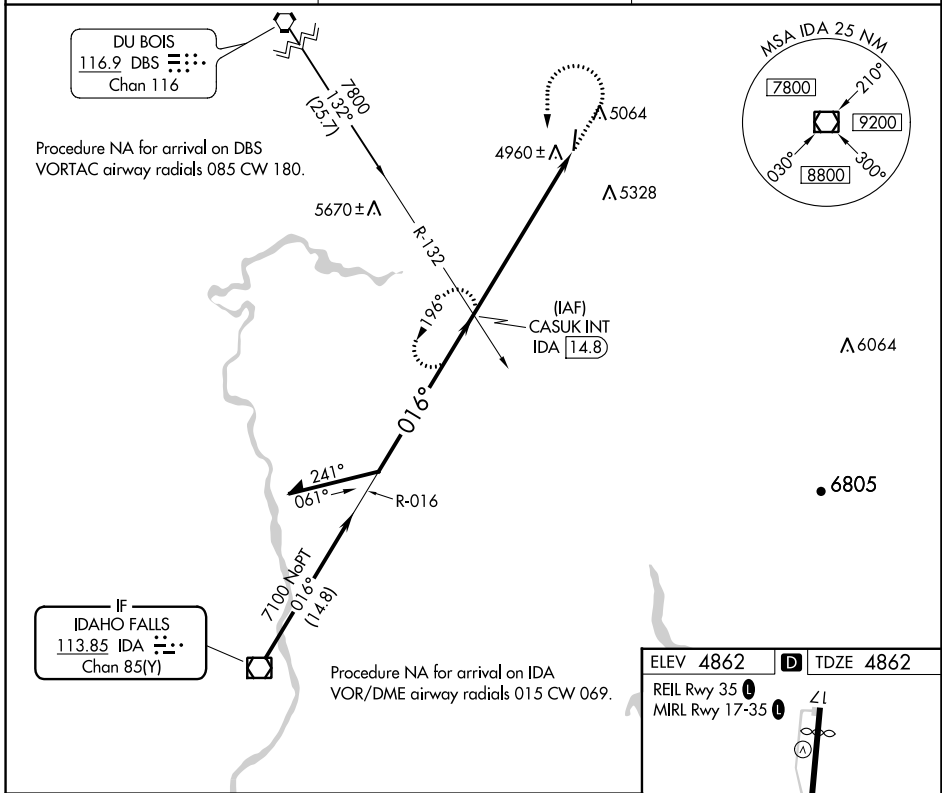
# VOR RWY 35

REXBURG-MADISON COUNTY (R.X.E)

**▼** Rwy 35 helicopter visibility reduction below 1 SM NA.  
**▲** Straight-in Rwy 35 NA at night, Circling Rwy 35 NA at night.

MISSED APPROACH: Climb to 6200 then climbing left turn to 7100 on IDA R-016 to CASUK INT/IDA 14.8 DME and hold.

ASOS <b>135.075</b>	SALT LAKE CENTER <b>128.35 239.25</b>	UNICOM <b>122.8</b> (CTAF) <b>📻</b>
------------------------	--	--



ELEV 4862	TDZE 4862
REIL Rwy 35	MIRL Rwy 17-35

420 x 75

4890 Δ

4890 Δ

4890 Δ

4890 Δ

35

016° 6.9 NM from FAF

FAF to MAP 6.9 NM

Knots	60	90	120	150	180
Min:Sec	6:54	4:36	3:27	2:46	2:18

CATEGORY	A	B	C	D
S-35	5680-1 818 (900-1)	5680-1¼ 818 (900-1¼)	5680-2½ 818 (900-2½)	5760-3 898 (900-3)
<b>📻</b> CIRCLING	5680-1¼ 818 (900-1¼)		5680-2½ 818 (900-2½)	

NW-1, 31 OCT 2024 to 28 NOV 2024

NW-1, 31 OCT 2024 to 28 NOV 2024