

APP CRS	Rwy Idg	5280
066°	TDZE	2671
	Apt Elev	2684

RNAV (GPS) RWY 6

LONESOME PINE (LNP)

RNP APCH.

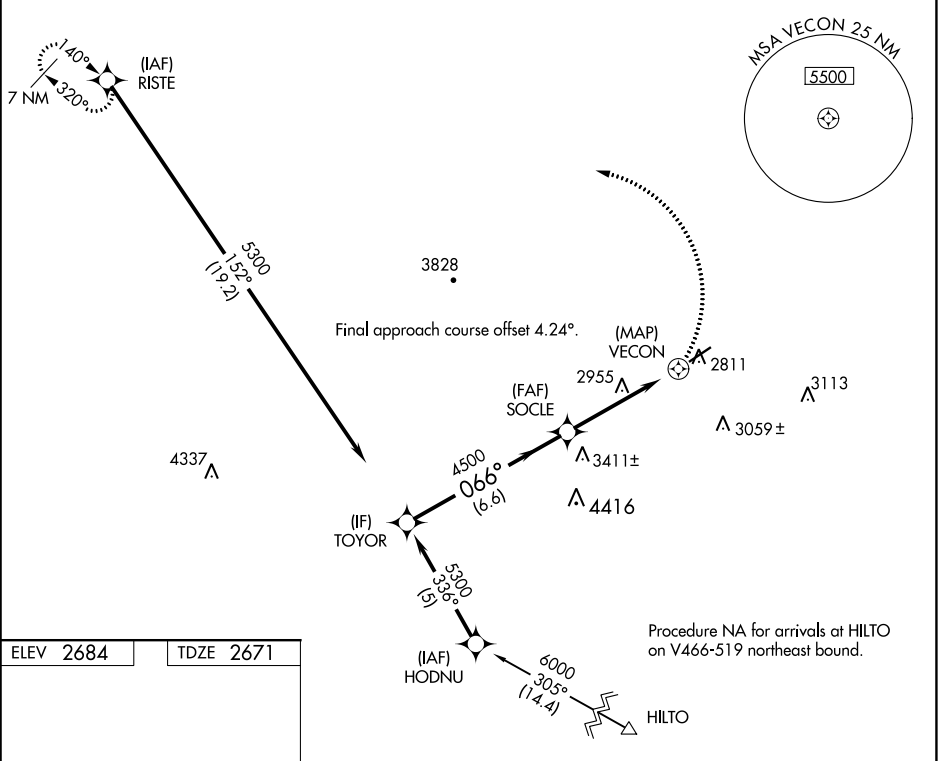
- ▼ Procedure NA at night.
- ▲ Rwy 6 helicopter visibility reduction below 1 SM NA.

MISSED APPROACH: Climbing left turn to 6400 direct RISTE and hold.

AWOS-3
118.6

INDIANAPOLIS CENTER
126.575 257.85

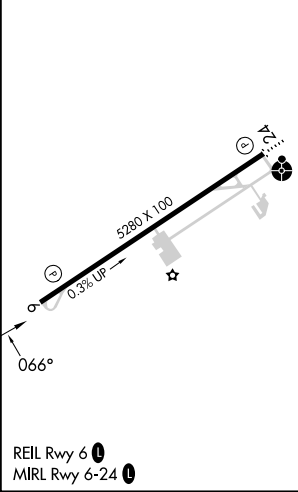
UNICOM
123.0 (CTAF)



NE-3, 08 AUG 2024 to 05 SEP 2024

NE-3, 08 AUG 2024 to 05 SEP 2024

ELEV 2684	TDZE 2671
-----------	-----------



VGSI and descent angles not coincident (VGSI Angle 3.00/TCH 34).

	6400	RISTE		
TOYOR	5300	066°		
SOCLE	4500	3.34° TCH 34		
VECON				
	6.6 NM	4.6 NM		
0.5 NM				
CATEGORY	A	B	C	D
LNAV MDA	3260-1	589 (600-1)	3260-1¾	589 (600-1¾)
CIRCLING	3260-1 576 (600-1)	3360-1 676 (700-1)	3360-2 676 (700-2)	3560-2¾ 876 (900-2¾)